

# Oct4 antibody [9B7]

**Cat. No. GTX83850**

<b>Host</b>	Mouse
<b>Clonality</b>	Monoclonal
<b>Isotype</b>	IgG1
<b>Applications</b>	WB, ICC/IF, IHC-P
<b>Reactivity</b>	Human, Dog

**Package**  
100 µl

## Applications

### Application Note

\*Optimal dilutions/concentrations should be determined by the researcher.

Suggested dilution	Recommended dilution
WB	1:5000
ICC/IF	1:100
IHC-P	1:50

Not tested in other applications.

**Calculated MW** 39 kDa. ( [Note](#) )

## Properties

<b>Form</b>	Liquid
<b>Buffer</b>	PBS, 1% BSA, 50% Glycerol
<b>Preservative</b>	0.02% Sodium azide
<b>Storage</b>	Store as concentrated solution. Centrifuge briefly prior to opening vial. For short-term storage (1-2 weeks), store at 4°C. For long-term storage, aliquot and store at -20°C or below. Avoid multiple freeze-thaw cycles.
<b>Concentration</b>	0.25 mg/ml (Please refer to the vial label for the specific concentration.)
<b>Immunogen</b>	Full length human recombinant protein of human POU5F1 (NP_002692) produced in E.coli.
<b>Purification</b>	Purified by affinity chromatography
<b>Conjugation</b>	Unconjugated

### Note

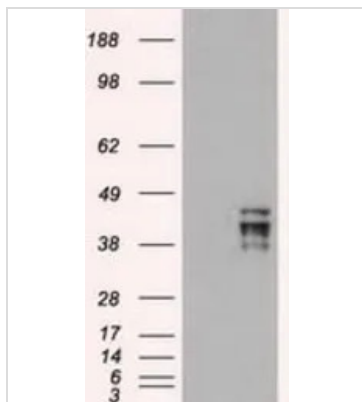
For laboratory research use only. Not for any clinical, therapeutic, or diagnostic use in humans or animals. Not for animal or human consumption.

Purchasers shall not, and agree not to enable third parties to, analyze, copy, reverse engineer or otherwise attempt to determine the structure or sequence of the product.



For full product information, images and publications, please visit our [website](#).

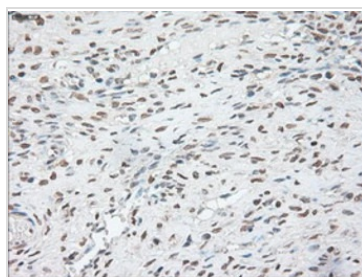
## DATA IMAGES



### GTx83850 WB Image

WB analysis of HEK293T cells transfected with Oct4 plasmid (Right) or empty vector (Left) for 48 hrs using GTx83850 Oct4 antibody [9B7].

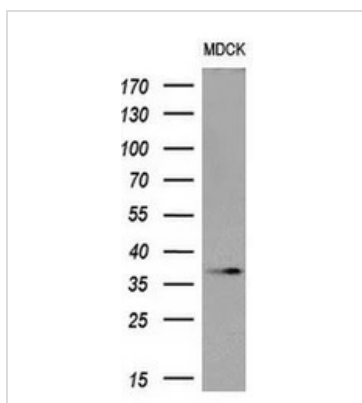
Loading : 5 ug per lane



### GTx83850 IHC-P Image

IHC-P analysis of human ovary tissue using GTx83850 Oct4 antibody [9B7].

Antigen retrieval : Heat-induced epitope retrieval by 10mM citrate buffer, pH6.0, 100°C for 10min.

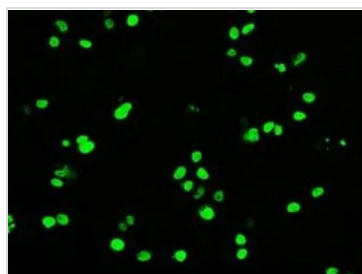


### GTx83850 WB Image

WB analysis of MDCK cell lysate using GTx83850 Oct4 antibody [9B7].

Loading : 10 ug per lane

Dilution : 1:200



### GTx83850 ICC/IF Image

ICC/IF analysis of COS7 cells transiently transfected with 43377 plasmid using GTx83850 Oct4 antibody [9B7].



For full product information, images and publications, please visit our [website](https://www.genetex.com).