

PLK1 antibody [3F12]

Cat. No. GTX83864

Host	Mouse
Clonality	Monoclonal
Isotype	IgG1
Applications	WB, FCM, IP
Reactivity	Human, Mouse

Package
100 µl

Applications

Application Note

*Optimal dilutions/concentrations should be determined by the researcher.

Suggested dilution	Recommended dilution
WB	1:1000-1:2000
FCM	1:100
IP	2ug/500ul

Not tested in other applications.

Calculated MW 68 kDa. ([Note](#))

Properties

Form	Liquid
Buffer	PBS, 1% BSA, 50% Glycerol
Preservative	0.02% Sodium azide
Storage	Store as concentrated solution. Centrifuge briefly prior to opening vial. For short-term storage (1-2 weeks), store at 4°C. For long-term storage, aliquot and store at -20°C or below. Avoid multiple freeze-thaw cycles.
Concentration	1.01 mg/ml (Please refer to the vial label for the specific concentration.)
Immunogen	Full-length protein expressed in 293T cell transfected with human PLK1 expression vector
Purification	Purified by affinity chromatography
Conjugation	Unconjugated

Note

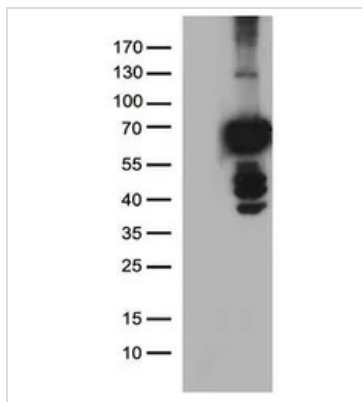
For laboratory research use only. Not for any clinical, therapeutic, or diagnostic use in humans or animals. Not for animal or human consumption.

Purchasers shall not, and agree not to enable third parties to, analyze, copy, reverse engineer or otherwise attempt to determine the structure or sequence of the product.



For full product information, images and publications, please visit our [website](#).

DATA IMAGES

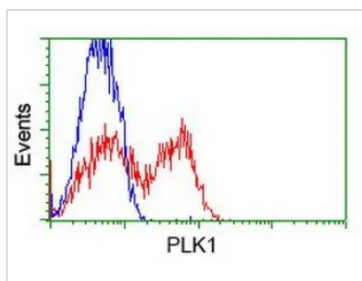


GTX83864 WB Image

WB analysis of HEK293T cells transfected with PLK1 plasmid (Right) or empty vector (Left) for 48 hrs using GTX83864 PLK1 antibody [3F12].

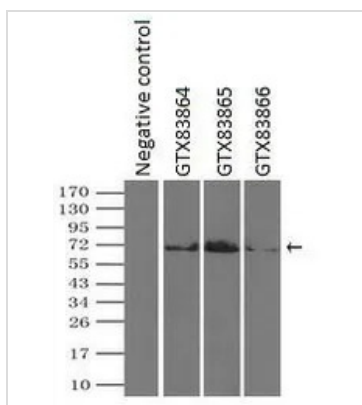
Loading : 5 ug per lane

Dilution : 1:500



GTX83864 FCM Image

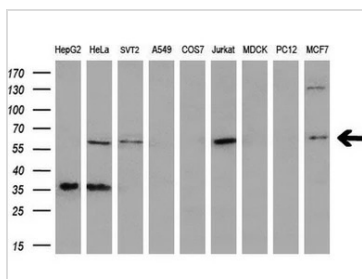
FACS analysis of HEK293T cells transfected with either PLK1 plasmid (Red) or empty vector control plasmid (Blue) using GTX83864 PLK1 antibody [3F12].



GTX83864 IP Image

IP analysis of DDDDK tagged PLK1 overexpressed HEK293T lysate using GTX83864 PLK1 antibody [3F12]. After extensive wash to remove any non-specific binding, the immuno-precipitated products were analyzed with rabbit anti-DDDDK polyclonal antibody.

IP reaction : 2µg antibody / 500µl cell lysate



GTX83864 WB Image

WB analysis of various cell lines using GTX83864 PLK1 antibody [3F12].

Loading : 35 ug per lane

Dilution : 1:200



For full product information, images and publications, please visit our [website](http://www.genetex.com).