

## Profilin 1 antibody [1D5]

**Cat. No. GTX83903**

<b>Host</b>	Mouse
<b>Clonality</b>	Monoclonal
<b>Isotype</b>	IgG2a
<b>Applications</b>	WB, ICC/IF, IHC-P, FCM
<b>Reactivity</b>	Human, Mouse, Rat, Dog, Monkey

References ( 1 )

Package

100 µl

## Applications

**Application Note**

\*Optimal dilutions/concentrations should be determined by the researcher.

Suggested dilution	Recommended dilution
WB	1:200-1:2000
ICC/IF	1:100
IHC-P	1:50
FCM	1:100

Not tested in other applications.

**Calculated MW** 15 kDa. ( [Note](#) )

## Properties

<b>Form</b>	Liquid
<b>Buffer</b>	PBS, 1% BSA, 50% Glycerol
<b>Preservative</b>	0.02% Sodium azide
<b>Storage</b>	Store as concentrated solution. Centrifuge briefly prior to opening vial. For short-term storage (1-2 weeks), store at 4°C. For long-term storage, aliquot and store at -20°C or below. Avoid multiple freeze-thaw cycles.
<b>Concentration</b>	1 mg/ml (Please refer to the vial label for the specific concentration.)
<b>Immunogen</b>	Full length human recombinant protein of human PFN1 (NP_005013) produced in HEK293T cell.
<b>Purification</b>	Purified by affinity chromatography From tissue culture supernatant
<b>Conjugation</b>	Unconjugated



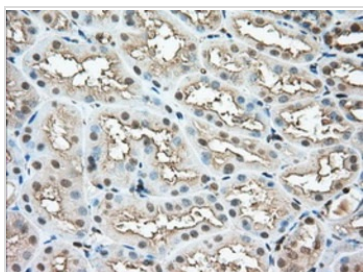
For full product information, images and publications, please visit our [website](#).

For laboratory research use only. Not for any clinical, therapeutic, or diagnostic use in humans or animals. Not for animal or human consumption.

**Note**

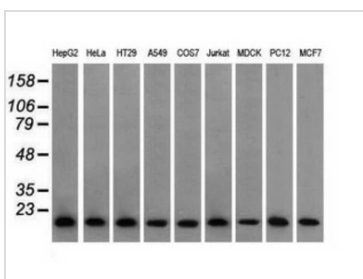
Purchasers shall not, and agree not to enable third parties to, analyze, copy, reverse engineer or otherwise attempt to determine the structure or sequence of the product.

DATA IMAGES



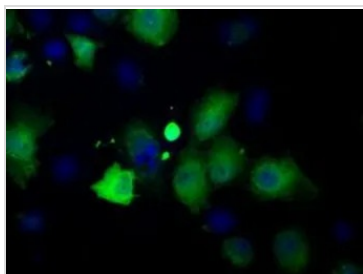
**GTX83903 IHC-P Image**

IHC-P analysis of human kidney tissue using GTX83903 Profilin 1 antibody [1D5].  
 Antigen retrieval : Heat-induced epitope retrieval by 10mM citrate buffer, pH6.0, 100°C for 10min.  
 Dilution : 1:50



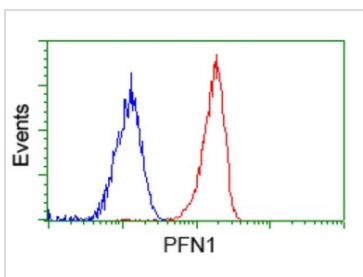
**GTX83903 WB Image**

WB analysis of various cell lines using GTX83903 Profilin 1 antibody [1D5].  
 Loading : 35 ug per lane



**GTX83903 ICC/IF Image**

ICC/IF analysis of COS7 cells transiently transfected with Profilin 1 plasmid using GTX83903 Profilin 1 antibody [1D5].



**GTX83903 FCM Image**

FACS analysis of Jurkat cells using GTX83903 Profilin 1 antibody [1D5].  
 Red : Primary antibody  
 Blue : Negative control antibody



For full product information, images and publications, please visit our [website](#).