

PECR antibody [1C9]

Cat. No. GTX83914

| | |
|---------------------|------------------------|
| Host | Mouse |
| Clonality | Monoclonal |
| Isotype | IgG1 |
| Applications | WB, ICC/IF, IHC-P, FCM |
| Reactivity | Human, Monkey |

Package
 100 µl

Applications

Application Note

*Optimal dilutions/concentrations should be determined by the researcher.

| Suggested dilution | Recommended dilution |
|--------------------|----------------------|
| WB | 1:500-1:2000 |
| ICC/IF | 1:100 |
| IHC-P | 1:150 |
| FCM | 1:100 |

Not tested in other applications.

Calculated MW 33 kDa. ([Note](#))

Properties

| | |
|----------------------|--|
| Form | Liquid |
| Buffer | PBS, 1% BSA, 50% Glycerol |
| Preservative | 0.02% Sodium azide |
| Storage | Store as concentrated solution. Centrifuge briefly prior to opening vial. For short-term storage (1-2 weeks), store at 4°C. For long-term storage, aliquot and store at -20°C or below. Avoid multiple freeze-thaw cycles. |
| Concentration | 1 mg/ml (Please refer to the vial label for the specific concentration.) |
| Immunogen | Full length human recombinant protein of human PECR (NP_060911) produced in HEK293T cell. |
| Purification | Purified by affinity chromatography From tissue culture supernatant |
| Conjugation | Unconjugated |

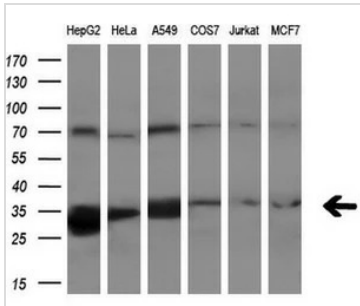


For full product information, images and publications, please visit our [website](#).

For laboratory research use only. Not for any clinical, therapeutic, or diagnostic use in humans or animals. Not for animal or human consumption.

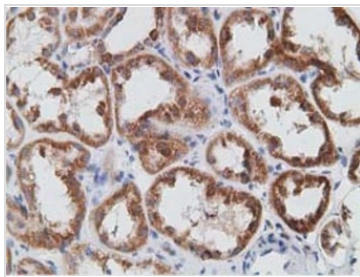
Note
 Purchasers shall not, and agree not to enable third parties to, analyze, copy, reverse engineer or otherwise attempt to determine the structure or sequence of the product.

DATA IMAGES



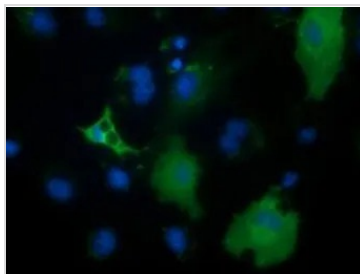
GTX83914 WB Image

WB analysis of various cell lines using GTX83914 PECC antibody [1C9].
 Loading : 10 ug per lane
 Dilution : 1:200



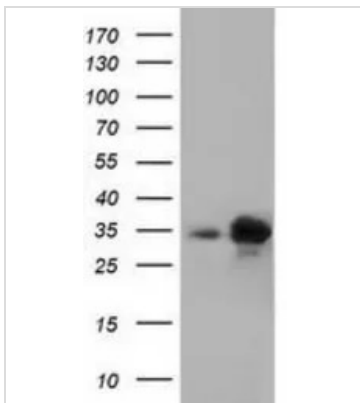
GTX83914 IHC-P Image

IHC-P analysis of human kidney tissue using GTX83914 PECC antibody [1C9].
 Antigen retrieval : Heat-induced epitope retrieval by 10mM citrate buffer, pH6.0, 100°C for 10min.
 Dilution : 1:50



GTX83914 ICC/IF Image

ICC/IF analysis of COS7 cells transiently transfected with PECC plasmid using GTX83914 PECC antibody [1C9].



GTX83914 WB Image

WB analysis of HEK293T cells transfected with PECC plasmid (Right) or empty vector (Left) for 48 hrs using GTX83914 PECC antibody [1C9].
 Loading : 5 ug per lane



For full product information, images and publications, please visit our [website](#).