

PDX1 antibody [2A12]

Cat. No. GTX83919

Host	Mouse
Clonality	Monoclonal
Isotype	IgG1
Applications	WB, ICC/IF, IHC-P
Reactivity	Human, Mouse

Package
100 µl

Applications

Application Note

*Optimal dilutions/concentrations should be determined by the researcher.

Suggested dilution	Recommended dilution
WB	1:20000
ICC/IF	1:50-1:100
IHC-P	1:50

Not tested in other applications.

Calculated MW 31 kDa. ([Note](#))

Properties

Form	Liquid
Buffer	PBS, 1% BSA, 50% Glycerol
Preservative	0.02% Sodium azide
Storage	Store as concentrated solution. Centrifuge briefly prior to opening vial. For short-term storage (1-2 weeks), store at 4°C. For long-term storage, aliquot and store at -20°C or below. Avoid multiple freeze-thaw cycles.
Concentration	1 mg/ml (Please refer to the vial label for the specific concentration.)
Immunogen	Full length human recombinant protein of human PDX1 (NP_000200) produced in E.coli.
Purification	Purified by affinity chromatography From tissue culture supernatant
Conjugation	Unconjugated

Note

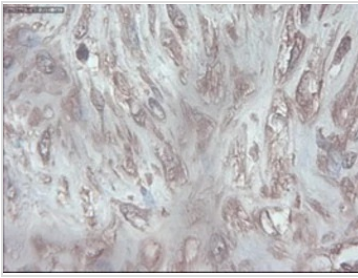
For laboratory research use only. Not for any clinical, therapeutic, or diagnostic use in humans or animals. Not for animal or human consumption.

Purchasers shall not, and agree not to enable third parties to, analyze, copy, reverse engineer or otherwise attempt to determine the structure or sequence of the product.



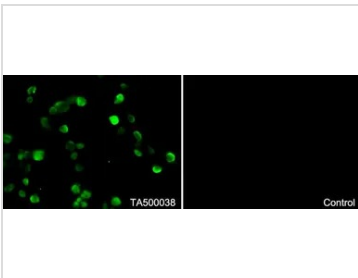
For full product information, images and publications, please visit our [website](#).

DATA IMAGES



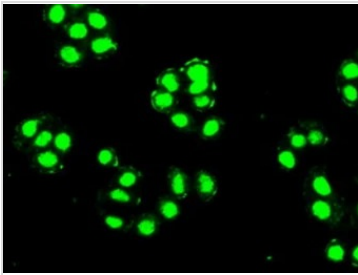
GTx83919 IHC-P Image

IHC-P analysis of human pancreas carcinoma tissue using GTx83919 PDX1 antibody [2A12].
Antigen retrieval : Heat-induced epitope retrieval by 10mM citrate buffer, pH6.0, 100°C for 10min.



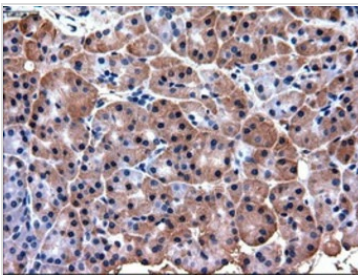
GTx83919 ICC/IF Image

ICC/IF analysis of HeLa cells transiently transfected with PDX1 plasmid using GTx83919 PDX1 antibody [2A12].



GTx83919 ICC/IF Image

ICC/IF analysis of HT29 cells using GTx83919 PDX1 antibody [2A12].



GTx83919 IHC-P Image

IHC-P analysis of human pancreas tissue using GTx83919 PDX1 antibody [2A12].
Antigen retrieval : Heat-induced epitope retrieval by 10mM citrate buffer, pH6.0, 100°C for 10min.



For full product information, images and publications, please visit our [website](https://www.genetex.com).