

OTUB2 antibody [11B3]

Cat. No. GTX83953

| | |
|---------------------|--------------------------------|
| Host | Mouse |
| Clonality | Monoclonal |
| Isotype | IgG1 |
| Applications | WB, FCM |
| Reactivity | Human, Mouse, Rat, Dog, Monkey |

References (2)

Package

100 µl

Applications

Application Note

*Optimal dilutions/concentrations should be determined by the researcher.

| Suggested dilution | Recommended dilution |
|--------------------|----------------------|
| WB | 1:200-1:500 |
| FCM | 1:100 |

Not tested in other applications.

Calculated MW 27 kDa. ([Note](#))**Product Note** Knockdown/Knockout validation was supported by references (PMID:37024477)

Properties

| | |
|----------------------|--|
| Form | Liquid |
| Buffer | PBS, 1% BSA, 50% Glycerol |
| Preservative | 0.02% Sodium azide |
| Storage | Store as concentrated solution. Centrifuge briefly prior to opening vial. For short-term storage (1-2 weeks), store at 4°C. For long-term storage, aliquot and store at -20°C or below. Avoid multiple freeze-thaw cycles. |
| Concentration | 1 mg/ml (Please refer to the vial label for the specific concentration.) |
| Immunogen | Full length human recombinant protein of human OTUB2 (NP_075601) produced in HEK293T cell. |
| Purification | Purified by affinity chromatography |
| Conjugation | Unconjugated |

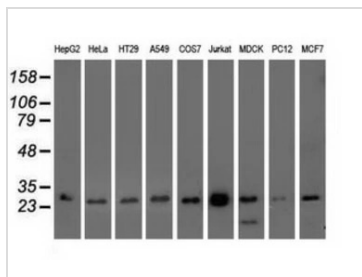
Note

For laboratory research use only. Not for any clinical, therapeutic, or diagnostic use in humans or animals. Not for animal or human consumption.

Purchasers shall not, and agree not to enable third parties to, analyze, copy, reverse engineer or otherwise attempt to determine the structure or sequence of the product.

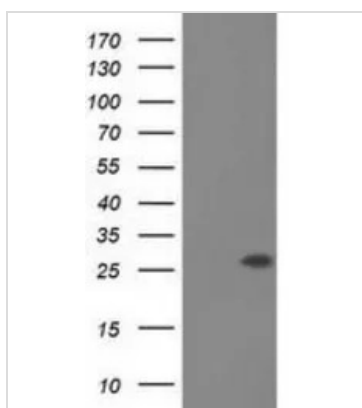
For full product information, images and publications, please visit our [website](#).

DATA IMAGES



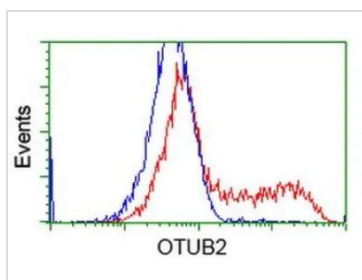
GTX83953 WB Image

WB analysis of various cell lines using GTX83953 OTUB2 antibody [11B3].
Loading : 35 ug per lane



GTX83953 WB Image

WB analysis of HEK293T cells transfected with OTUB2 plasmid (Right) or empty vector (Left) for 48 hrs using GTX83953 OTUB2 antibody [11B3].
Loading : 5 ug per lane



GTX83953 FCM Image

FACS analysis of HEK293T cells transfected with either OTUB2 plasmid(Red) or empty vector control plasmid(Blue) using GTX83953 OTUB2 antibody [11B3].



For full product information, images and publications, please visit our [website](#).