

ODC antibody [1G6]

Cat. No. GTX83968

| | |
|---------------------|-------------------------|
| Host | Mouse |
| Clonality | Monoclonal |
| Isotype | IgG1 |
| Applications | WB, ICC/IF, FCM |
| Reactivity | Human, Rat, Dog, Monkey |

Package
100 µl

Applications

Application Note

*Optimal dilutions/concentrations should be determined by the researcher.

| Suggested dilution | Recommended dilution |
|--------------------|----------------------|
| WB | 1:1000-1:2000 |
| ICC/IF | 1:100 |
| FCM | 1:100 |

Not tested in other applications.

Calculated MW 51 kDa. ([Note](#))

Properties

| | |
|----------------------|--|
| Form | Liquid |
| Buffer | PBS, 1% BSA, 50% Glycerol |
| Preservative | 0.02% Sodium azide |
| Storage | Store as concentrated solution. Centrifuge briefly prior to opening vial. For short-term storage (1-2 weeks), store at 4°C. For long-term storage, aliquot and store at -20°C or below. Avoid multiple freeze-thaw cycles. |
| Concentration | 0.57 mg/ml (Please refer to the vial label for the specific concentration.) |
| Immunogen | Full length human recombinant protein of human ODC1 (NP_002530) produced in HEK293T cell. |
| Purification | Purified by affinity chromatography |
| Conjugation | Unconjugated |

Note

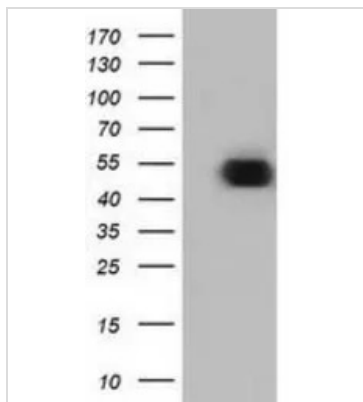
For laboratory research use only. Not for any clinical, therapeutic, or diagnostic use in humans or animals. Not for animal or human consumption.

Purchasers shall not, and agree not to enable third parties to, analyze, copy, reverse engineer or otherwise attempt to determine the structure or sequence of the product.



For full product information, images and publications, please visit our [website](#).

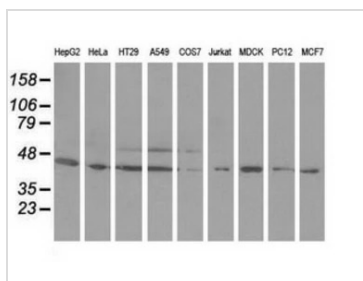
DATA IMAGES



GTX83968 WB Image

WB analysis of HEK293T cells transfected with ODC plasmid (Right) or empty vector (Left) for 48 hrs using GTX83968 ODC antibody [1G6].

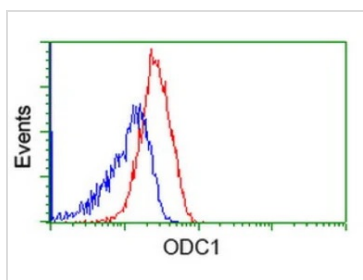
Loading : 5 ug per lane



GTX83968 WB Image

WB analysis of various cell lines using GTX83968 ODC antibody [1G6].

Loading : 35 ug per lane

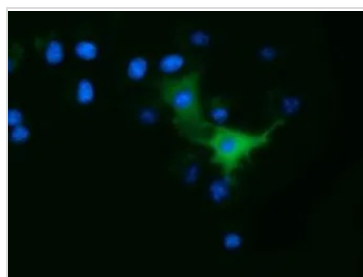


GTX83968 FCM Image

FACS analysis of Jurkat cells using GTX83968 ODC antibody [1G6].

Red : Primary antibody

Blue : Negative control antibody



GTX83968 ICC/IF Image

ICC/IF analysis of COS7 cells transiently transfected with ODC plasmid using GTX83968 ODC antibody [1G6].



For full product information, images and publications, please visit our [website](#).