

## NXNL2 antibody [1C3]

Cat. No. GTX83970

Host	Mouse
Clonality	Monoclonal
Isotype	IgG2a
Applications	WB, ICC/IF, IHC-P
Reactivity	Human, Dog

Package  
100 µl

## Applications

## Application Note

\*Optimal dilutions/concentrations should be determined by the researcher.

Suggested dilution	Recommended dilution
WB	1:500-1:2000
ICC/IF	1:100
IHC-P	1:50

Not tested in other applications.

Calculated MW 18 kDa. ( [Note](#) )

## Properties

Form	Liquid
Buffer	PBS, 1% BSA, 50% Glycerol
Preservative	0.02% Sodium azide
Storage	Store as concentrated solution. Centrifuge briefly prior to opening vial. For short-term storage (1-2 weeks), store at 4°C. For long-term storage, aliquot and store at -20°C or below. Avoid multiple freeze-thaw cycles.
Concentration	0.81 mg/ml (Please refer to the vial label for the specific concentration.)
Immunogen	Full length human recombinant protein of human NXNL2 (NP_660326) produced in HEK293T cell.
Purification	Purified by affinity chromatography
Conjugation	Unconjugated

## Note

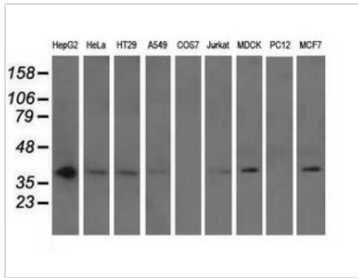
For laboratory research use only. Not for any clinical, therapeutic, or diagnostic use in humans or animals. Not for animal or human consumption.

Purchasers shall not, and agree not to enable third parties to, analyze, copy, reverse engineer or otherwise attempt to determine the structure or sequence of the product.



For full product information, images and publications, please visit our [website](#).

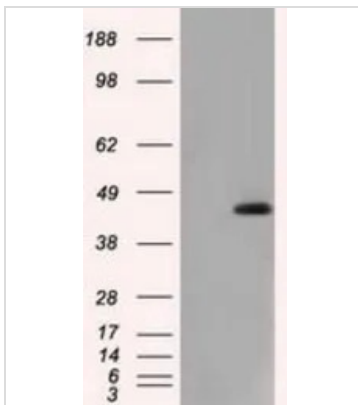
DATA IMAGES



**GTX83970 WB Image**

WB analysis of various cell lines using GTX83970 NXNL2 antibody [1C3].

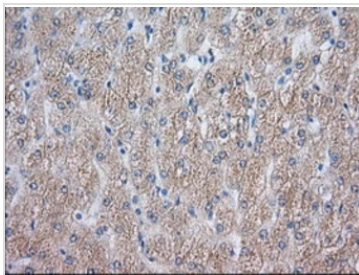
Loading : 35 ug per lane



**GTX83970 WB Image**

WB analysis of HEK293T cells transfected with NXNL2 plasmid (Right) or empty vector (Left) for 48 hrs using GTX83970 NXNL2 antibody [1C3].

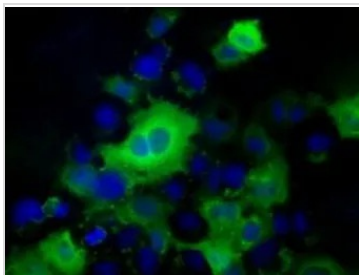
Loading : 5 ug per lane



**GTX83970 IHC-P Image**

IHC-P analysis of human liver tissue using GTX83970 NXNL2 antibody [1C3].

Antigen retrieval : Heat-induced epitope retrieval by 10mM citrate buffer, pH6.0, 100°C for 10min.



**GTX83970 ICC/IF Image**

ICC/IF analysis of COS7 cells transiently transfected with NXNL2 plasmid using GTX83970 NXNL2 antibody [1C3].



For full product information, images and publications, please visit our [website](#).