

Neurotrophin 3 antibody [5C7]

Cat. No. GTX83983

Host	Mouse
Clonality	Monoclonal
Isotype	IgG2a
Application	WB, IHC-P
Reactivity	Human

Package
100 µl

APPLICATION

Application Note

*Optimal dilutions/concentrations should be determined by the researcher.

Suggested dilution	Recommended dilution
WB	1:40000
IHC-P	1:50

Not tested in other applications.

Calculated MW 29 kDa. ([Note](#))

PROPERTIES

Form	Liquid
Buffer	PBS, 1% BSA, 50% Glycerol
Preservative	0.02% Sodium azide
Storage	Store as concentrated solution. Centrifuge briefly prior to opening vial. For short-term storage (1-2 weeks), store at 4°C. For long-term storage, aliquot and store at -20°C or below. Avoid multiple freeze-thaw cycles.
Concentration	0.2 mg/ml (Please refer to the vial label for the specific concentration.)
Immunogen	Recombinant protein expressed in E.coli corresponding to amino acids 139-257 of human NT3
Purification	Purified by affinity chromatography
Conjugation	Unconjugated

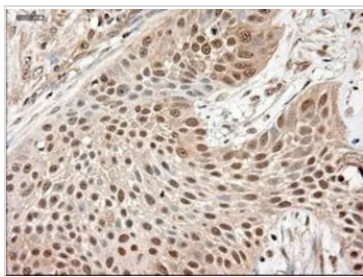
Note

For laboratory research use only. Not for any clinical, therapeutic, or diagnostic use in humans or animals. Not for animal or human consumption.

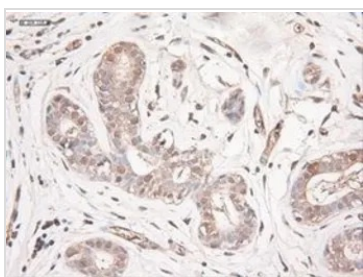
Purchasers shall not, and agree not to enable third parties to, analyze, copy, reverse engineer or otherwise attempt to determine the structure or sequence of the product.



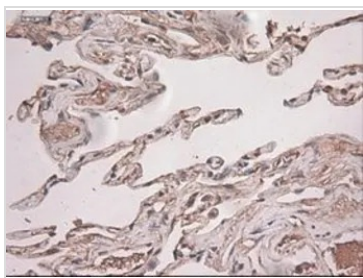
For full product information, images and publications, please visit our [website](#).

DATA IMAGES

GTX83983 IHC-P Image

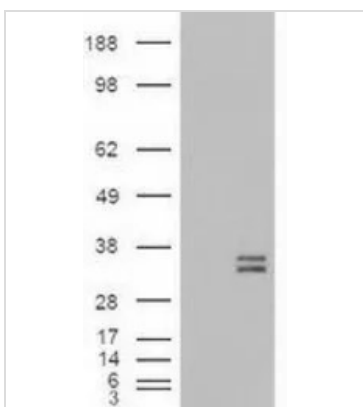
IHC-P analysis of lung carcinoma tissue using GTX83983 Neurotrophin 3 antibody [5C7].
Antigen retrieval : Heat-induced epitope retrieval by 10mM citrate buffer, pH6.0, 100°C for 10min.


GTX83983 IHC-P Image

IHC-P analysis of breast tissue using GTX83983 Neurotrophin 3 antibody [5C7].
Antigen retrieval : Heat-induced epitope retrieval by 10mM citrate buffer, pH6.0, 100°C for 10min.


GTX83983 IHC-P Image

IHC-P analysis of lung tissue using GTX83983 Neurotrophin 3 antibody [5C7].
Antigen retrieval : Heat-induced epitope retrieval by 10mM citrate buffer, pH6.0, 100°C for 10min.


GTX83983 WB Image

WB analysis of HEK293T cells transfected with Neurotrophin 3 plasmid (Right) or empty vector (Left) for 48 hrs using GTX83983 Neurotrophin 3 antibody [5C7].
Loading : 5 ug per lane



For full product information, images and publications, please visit our [website](https://www.genetex.com).