

Neurotrophin 3 antibody [3D4]

Cat. No. GTX83984

| | |
|-------------|-------------------------|
| Host | Mouse |
| Clonality | Monoclonal |
| Isotype | IgG2a |
| Application | WB, IHC-P |
| Reactivity | Human, Rat, Dog, Monkey |

Reference (1)

Package

100 µl

APPLICATION

Application Note

*Optimal dilutions/concentrations should be determined by the researcher.

| Suggested dilution | Recommended dilution |
|--------------------|----------------------|
| WB | 1:5000-1:10000 |
| IHC-P | 1:50 |

Not tested in other applications.

Calculated MW 29 kDa. ([Note](#))

PROPERTIES

| | |
|---------------|--|
| Form | Liquid |
| Buffer | PBS, 1% BSA, 50% Glycerol |
| Preservative | 0.02% Sodium azide |
| Storage | Store as concentrated solution. Centrifuge briefly prior to opening vial. For short-term storage (1-2 weeks), store at 4°C. For long-term storage, aliquot and store at -20°C or below. Avoid multiple freeze-thaw cycles. |
| Concentration | 1 mg/ml (Please refer to the vial label for the specific concentration.) |
| Immunogen | Human recombinant protein fragment corresponding to amino acids 139-257 of human NT3 (NP_002518) produced in E.coli. |
| Purification | Purified by affinity chromatography From tissue culture supernatant |
| Conjugation | Unconjugated |

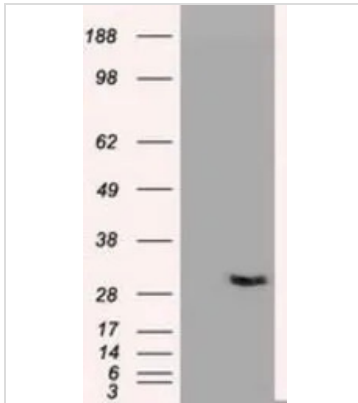
Note

For laboratory research use only. Not for any clinical, therapeutic, or diagnostic use in humans or animals. Not for animal or human consumption.

Purchasers shall not, and agree not to enable third parties to, analyze, copy, reverse engineer or otherwise attempt to determine the structure or sequence of the product.

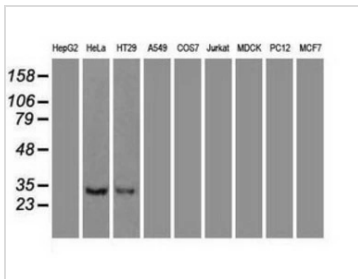


For full product information, images and publications, please visit our [website](#).

DATA IMAGES

GTX83984 WB Image

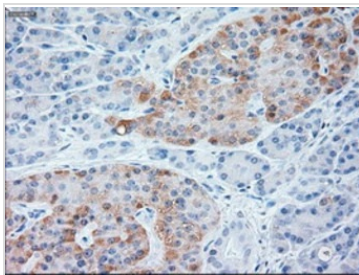
WB analysis of HEK293T cells transfected with Neurotrophin 3 plasmid (Right) or empty vector (Left) for 48 hrs using GTX83984 Neurotrophin 3 antibody [3D4].

Loading : 5 ug per lane


GTX83984 WB Image

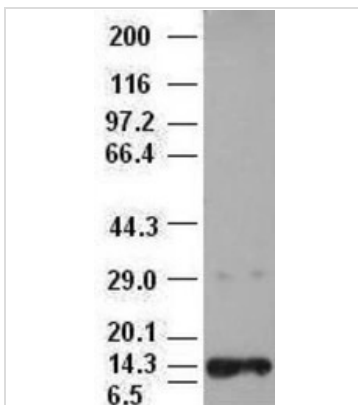
WB analysis of various cell lines using GTX83984 Neurotrophin 3 antibody [3D4].

Loading : 35 ug per lane


GTX83984 IHC-P Image

IHC-P analysis of human pancreas tissue using GTX83984 Neurotrophin 3 antibody [3D4].

Antigen retrieval : Heat-induced epitope retrieval by 10mM citrate buffer, pH6.0, 100°C for 10min.


GTX83984 WB Image

WB analysis of recombinant human NT3 using GTX83984 Neurotrophin 3 antibody [3D4].

Dilution : 1:10000



For full product information, images and publications, please visit our [website](https://www.genetex.com).