

## NT5DC1 antibody [1E11]

Cat. No. GTX83992

<b>Host</b>	Mouse
<b>Clonality</b>	Monoclonal
<b>Isotype</b>	IgG1
<b>Applications</b>	WB, IHC-P, FCM
<b>Reactivity</b>	Human, Rat, Dog, Monkey

**Package**  
100 µl

## Applications

## Application Note

\*Optimal dilutions/concentrations should be determined by the researcher.

Suggested dilution	Recommended dilution
WB	1:500-1:2000
IHC-P	1:150
FCM	1:100

Not tested in other applications.

**Calculated MW** 52 kDa. ( [Note](#) )

## Properties

<b>Form</b>	Liquid
<b>Buffer</b>	PBS, 1% BSA, 50% Glycerol
<b>Preservative</b>	0.02% Sodium azide
<b>Storage</b>	Store as concentrated solution. Centrifuge briefly prior to opening vial. For short-term storage (1-2 weeks), store at 4°C. For long-term storage, aliquot and store at -20°C or below. Avoid multiple freeze-thaw cycles.
<b>Concentration</b>	0.56 mg/ml (Please refer to the vial label for the specific concentration.)
<b>Immunogen</b>	Full length human recombinant protein of human NT5DC1 (NP_689942) produced in HEK293T cell.
<b>Purification</b>	Purified by affinity chromatography
<b>Conjugation</b>	Unconjugated

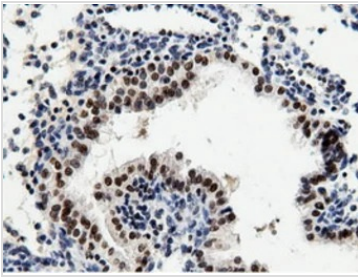
## Note

For laboratory research use only. Not for any clinical, therapeutic, or diagnostic use in humans or animals. Not for animal or human consumption.

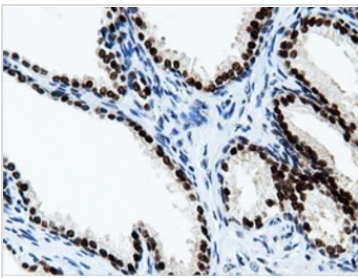
Purchasers shall not, and agree not to enable third parties to, analyze, copy, reverse engineer or otherwise attempt to determine the structure or sequence of the product.



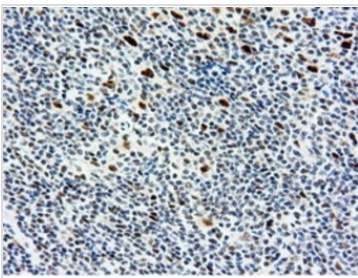
For full product information, images and publications, please visit our [website](#).

**DATA IMAGES**

**GTX83992 IHC-P Image**

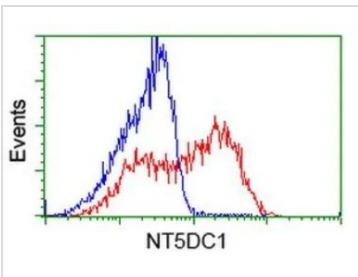
IHC-P analysis of human prostate carcinoma tissue using GTX83992 NT5DC1 antibody [1E11].  
Antigen retrieval : Heat-induced epitope retrieval by 10mM citrate buffer, pH6.0, 100°C for 10min.


**GTX83992 IHC-P Image**

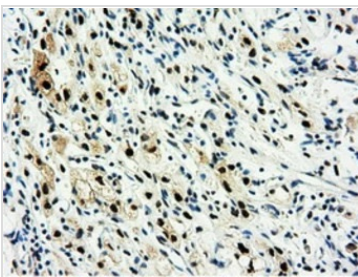
IHC-P analysis of human prostate tissue using GTX83992 NT5DC1 antibody [1E11].  
Antigen retrieval : Heat-induced epitope retrieval by 10mM citrate buffer, pH6.0, 100°C for 10min.


**GTX83992 IHC-P Image**

IHC-P analysis of human lymphoma tissue using GTX83992 NT5DC1 antibody [1E11].  
Antigen retrieval : Heat-induced epitope retrieval by 10mM citrate buffer, pH6.0, 100°C for 10min.


**GTX83992 FCM Image**

FACS analysis of HEK293T cells transfected with either NT5DC1 plasmid(Red) or empty vector control plasmid(Blue) using GTX83992 NT5DC1 antibody [1E11].


**GTX83992 IHC-P Image**

IHC-P analysis of human kidney carcinoma tissue using GTX83992 NT5DC1 antibody [1E11].  
Antigen retrieval : Heat-induced epitope retrieval by 10mM citrate buffer, pH6.0, 100°C for 10min.



For full product information, images and publications, please visit our [website](https://www.genetex.com).