

## NRBP1 antibody [6C11]

Cat. No. GTX84003

Host	Mouse
Clonality	Monoclonal
Isotype	IgG2a
Applications	WB, IHC-P, FCM, IP
Reactivity	Human, Monkey

References ( 1 )

Package

100 µl

## Applications

## Application Note

\*Optimal dilutions/concentrations should be determined by the researcher.

Suggested dilution	Recommended dilution
WB	1:2000
IHC-P	1:50
FCM	1:100
IP	2ug/500ul

Not tested in other applications.

Calculated MW 60 kDa. ( [Note](#) )

## Properties

Form	Liquid
Buffer	PBS, 1% BSA, 50% Glycerol
Preservative	0.02% Sodium azide
Storage	Store as concentrated solution. Centrifuge briefly prior to opening vial. For short-term storage (1-2 weeks), store at 4°C. For long-term storage, aliquot and store at -20°C or below. Avoid multiple freeze-thaw cycles.
Concentration	1.16 mg/ml (Please refer to the vial label for the specific concentration.)
Immunogen	Full-length protein expressed in 293T cell transfected with human NRBP1 expression vector
Purification	Purified by affinity chromatography
Conjugation	Unconjugated

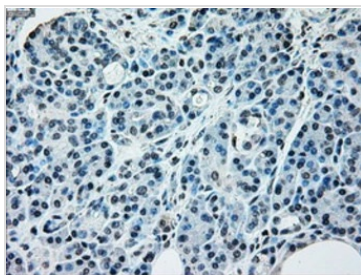
## Note

For laboratory research use only. Not for any clinical, therapeutic, or diagnostic use in humans or animals. Not for animal or human consumption.

Purchasers shall not, and agree not to enable third parties to, analyze, copy, reverse engineer or otherwise attempt to determine the structure or sequence of the product.

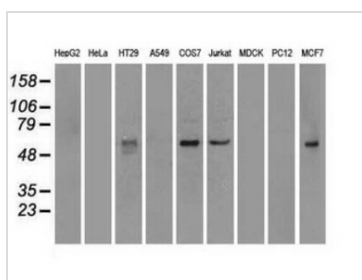


For full product information, images and publications, please visit our [website](#).

**DATA IMAGES**

**GTx84003 IHC-P Image**

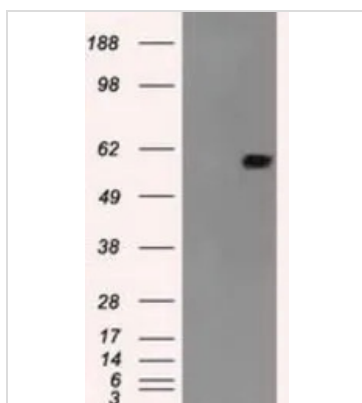
IHC-P analysis of human pancreas tissue using GTx84003 NRB1 antibody [6C11].

Antigen retrieval : Heat-induced epitope retrieval by 10mM citrate buffer, pH6.0, 100°C for 10min.


**GTx84003 WB Image**

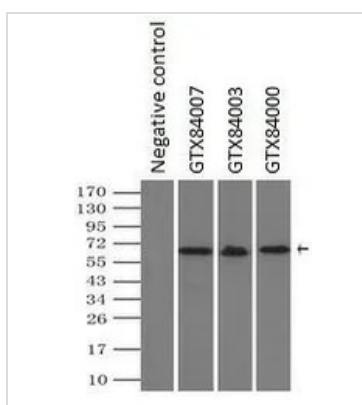
WB analysis of various cell lines using GTx84003 NRB1 antibody [6C11].

Loading : 35 ug per lane


**GTx84003 WB Image**

WB analysis of HEK293T cells transfected with NRB1 plasmid (Right) or empty vector (Left) for 48 hrs using GTx84003 NRB1 antibody [6C11].

Loading : 5 ug per lane


**GTx84003 IP Image**

IP analysis of DDDDK tagged NRB1 overexpressed HEK293T lysate using GTx84003 NRB1 antibody [6C11]. After extensive wash to remove any non-specific binding, the immuno-precipitated products were analyzed with rabbit anti-DDDDK polyclonal antibody.

IP reaction : 2µg antibody / 500µl cell lysate



For full product information, images and publications, please visit our [website](http://www.genetex.com).