

## NRBP1 antibody [5C3]

Cat. No. GTX84007

|                     |                            |
|---------------------|----------------------------|
| <b>Host</b>         | Mouse                      |
| <b>Clonality</b>    | Monoclonal                 |
| <b>Isotype</b>      | IgG2b                      |
| <b>Applications</b> | WB, ICC/IF, IHC-P, FCM, IP |
| <b>Reactivity</b>   | Human, Monkey              |

References ( 3 )

Package

100 µl

## Applications

## Application Note

\*Optimal dilutions/concentrations should be determined by the researcher.

| Suggested dilution | Recommended dilution |
|--------------------|----------------------|
| WB                 | 1:2000               |
| ICC/IF             | 1:100                |
| IHC-P              | 1:50                 |
| FCM                | 1:100                |
| IP                 | 2ug/500ul            |

Not tested in other applications.

Calculated MW 60 kDa. ( [Note](#) )

## Properties

|                      |  |
|----------------------|--|
| <b>Form</b>          | Liquid   |
| <b>Buffer</b>        | PBS, 1% BSA, 50% Glycerol  |
| <b>Preservative</b>  | 0.02% Sodium azide   |
| <b>Storage</b>       | Store as concentrated solution. Centrifuge briefly prior to opening vial. For short-term storage (1-2 weeks), store at 4°C. For long-term storage, aliquot and store at -20°C or below. Avoid multiple freeze-thaw cycles. |
| <b>Concentration</b> | 1.48 mg/ml (Please refer to the vial label for the specific concentration.)  |
| <b>Immunogen</b>     | Full-length protein expressed in 293T cell transfected with human NRBP1 expression vector  |
| <b>Purification</b>  | Purified by affinity chromatography  |
| <b>Conjugation</b>   | Unconjugated   |



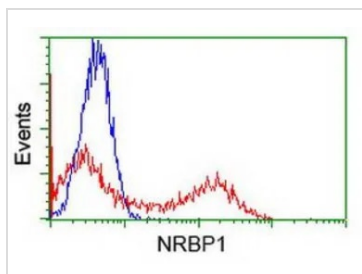
For full product information, images and publications, please visit our [website](#).

For laboratory research use only. Not for any clinical, therapeutic, or diagnostic use in humans or animals. Not for animal or human consumption.

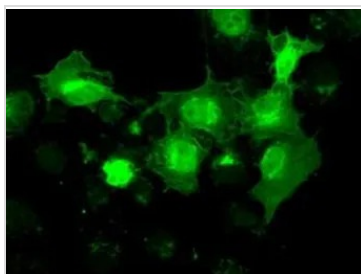
**Note**

Purchasers shall not, and agree not to enable third parties to, analyze, copy, reverse engineer or otherwise attempt to determine the structure or sequence of the product.

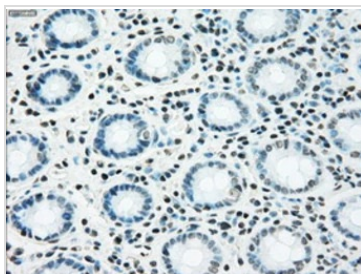
## DATA IMAGES

**GTX84007 FCM Image**

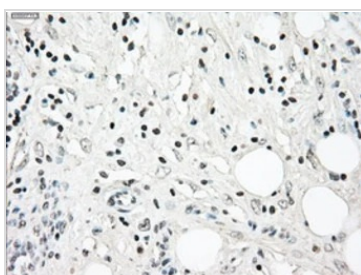
FACS analysis of HEK293T cells transfected with either NRBP1 plasmid(Blue) or empty vector control plasmid(Blue) using GTX84007 NRBP1 antibody [5C3].

**GTX84007 ICC/IF Image**

ICC/IF analysis of COS7 cells transiently transfected with NRBP1 plasmid using GTX84007 NRBP1 antibody [5C3].

**GTX84007 IHC-P Image**

IHC-P analysis of human colon tissue using GTX84007 NRBP1 antibody [5C3].  
Antigen retrieval : Heat-induced epitope retrieval by 10mM citrate buffer, pH6.0, 100°C for 10min.

**GTX84007 IHC-P Image**

IHC-P analysis of human pancreas carcinoma tissue using GTX84007 NRBP1 antibody [5C3].  
Antigen retrieval : Heat-induced epitope retrieval by 10mM citrate buffer, pH6.0, 100°C for 10min.



For full product information, images and publications, please visit our [website](#).