

Neurogenin 1 antibody [10B10]

Cat. No. GTX84049

Host	Mouse
Clonality	Monoclonal
Isotype	IgG1
Applications	WB, IP
Reactivity	Human, Monkey

Package
100 µl

Applications

Application Note

*Optimal dilutions/concentrations should be determined by the researcher.

Suggested dilution	Recommended dilution
WB	1:1000
IP	2-4ug/mg

Not tested in other applications.

Calculated MW 26 kDa. ([Note](#))

Properties

Form	Liquid
Buffer	PBS, 1% BSA, 50% Glycerol
Preservative	0.02% Sodium azide
Storage	Store as concentrated solution. Centrifuge briefly prior to opening vial. For short-term storage (1-2 weeks), store at 4°C. For long-term storage, aliquot and store at -20°C or below. Avoid multiple freeze-thaw cycles.
Concentration	0.55 mg/ml (Please refer to the vial label for the specific concentration.)
Immunogen	Full length human recombinant protein of human NEUROG1 (NP_006152) produced in HEK293T cell.
Purification	Purified by affinity chromatography
Conjugation	Unconjugated

Note

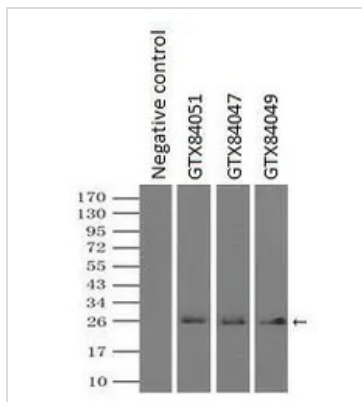
For laboratory research use only. Not for any clinical, therapeutic, or diagnostic use in humans or animals. Not for animal or human consumption.

Purchasers shall not, and agree not to enable third parties to, analyze, copy, reverse engineer or otherwise attempt to determine the structure or sequence of the product.



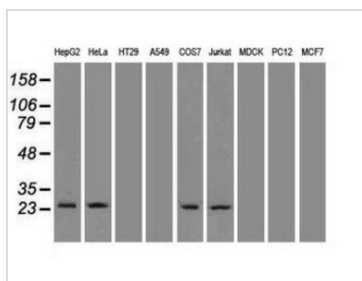
For full product information, images and publications, please visit our [website](#).

DATA IMAGES



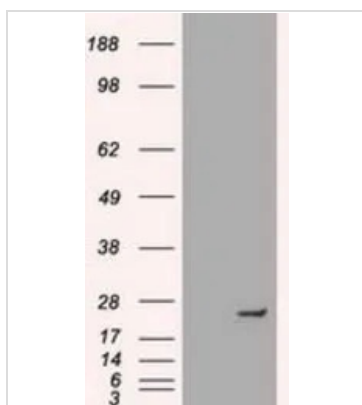
GTX84049 IP Image

IP analysis of DDDDK tagged Neurogenin 1 overexpressed HEK293T lysate using GTX84049 Neurogenin 1 antibody [10B10]. After extensive wash to remove any non-specific binding, the immuno-precipitated products were analyzed with rabbit anti-DDDDK polyclonal antibody.
 IP reaction : 2µg antibody / 500µl cell lysate



GTX84049 WB Image

WB analysis of various cell lines using GTX84049 Neurogenin 1 antibody [10B10].
 Loading : 35 ug per lane



GTX84049 WB Image

WB analysis of HEK293T cells transfected with Neurogenin 1 plasmid (Right) or empty vector (Left) for 48 hrs using GTX84049 Neurogenin 1 antibody [10B10].
 Loading : 5 ug per lane



For full product information, images and publications, please visit our [website](#).