

MOB1B antibody [1H2]

Cat. No. GTX84105

Host	Mouse
Clonality	Monoclonal
Isotype	IgG2a
Applications	WB, IHC-P, FCM
Reactivity	Human

Package
100 µl

Applications

Application Note

*Optimal dilutions/concentrations should be determined by the researcher.

Suggested dilution	Recommended dilution
WB	1:2000
IHC-P	1:150
FCM	1:100

Not tested in other applications.

Calculated MW 25 kDa. ([Note](#))

Properties

Form	Liquid
Buffer	PBS, 1% BSA, 50% Glycerol
Preservative	0.02% Sodium azide
Storage	Store as concentrated solution. Centrifuge briefly prior to opening vial. For short-term storage (1-2 weeks), store at 4°C. For long-term storage, aliquot and store at -20°C or below. Avoid multiple freeze-thaw cycles.
Concentration	1 mg/ml (Please refer to the vial label for the specific concentration.)
Immunogen	Full length human recombinant protein of human MOBKL1A(NP_775739) produced in HEK293T cell.
Purification	Purified by affinity chromatography
Conjugation	Unconjugated

Note

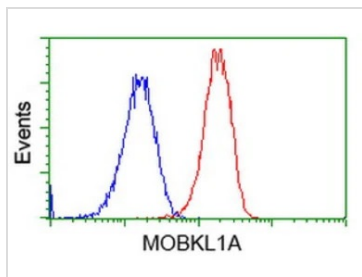
For laboratory research use only. Not for any clinical, therapeutic, or diagnostic use in humans or animals. Not for animal or human consumption.

Purchasers shall not, and agree not to enable third parties to, analyze, copy, reverse engineer or otherwise attempt to determine the structure or sequence of the product.



For full product information, images and publications, please visit our [website](#).

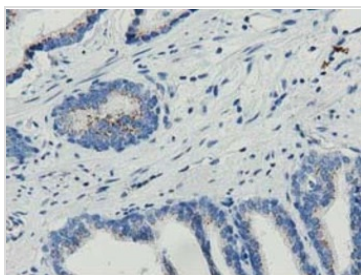
DATA IMAGES

**GTX84105 FCM Image**

FACS analysis of HeLa cells using GTX84105 MOB1B antibody [1H2].

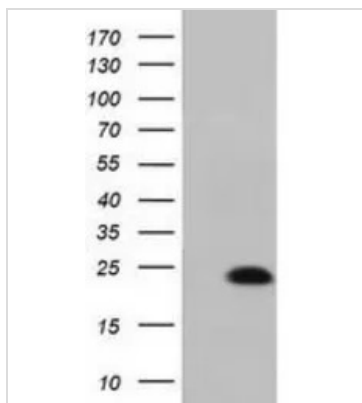
Red : Primary antibody

Blue : Negative control antibody

**GTX84105 IHC-P Image**

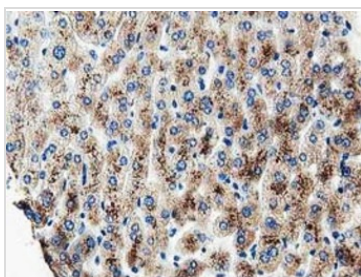
IHC-P analysis of human prostate carcinoma tissue using GTX84105 MOB1B antibody [1H2].

Dilution : 1:150

**GTX84105 WB Image**

WB analysis of HEK293T cells transfected with MOB1B plasmid (Right) or empty vector (Left) for 48 hrs using GTX84105 MOB1B antibody [1H2].

Loading : 5 ug per lane

**GTX84105 IHC-P Image**

IHC-P analysis of human liver tissue using GTX84105 MOB1B antibody [1H2].

Dilution : 1:150



For full product information, images and publications, please visit our [website](https://www.genetex.com).