

## Ki67 antibody [3D11]

Cat. No. GTX84107

Host	Mouse
Clonality	Monoclonal
Isotype	IgG2b
Applications	WB, IHC-P
Reactivity	Human, Mouse, Rat

References ( 1 )

Package

100 µl

## Applications

## Application Note

\*Optimal dilutions/concentrations should be determined by the researcher.

Suggested dilution	Recommended dilution
WB	1:1000
IHC-P	Assay dependent

Not tested in other applications.

Calculated MW 359 kDa. ( [Note](#) )

## Properties

Form	Liquid
Buffer	PBS, 1% BSA, 50% Glycerol
Preservative	0.02% Sodium azide
Storage	Store as concentrated solution. Centrifuge briefly prior to opening vial. For short-term storage (1-2 weeks), store at 4°C. For long-term storage, aliquot and store at -20°C or below. Avoid multiple freeze-thaw cycles.
Concentration	1 mg/ml (Please refer to the vial label for the specific concentration.)
Immunogen	Recombinant protein expressed in E.coli corresponding to amino acids 1-250 of human MKI67.
Purification	Purified by affinity chromatography From tissue culture supernatant
Conjugation	Unconjugated

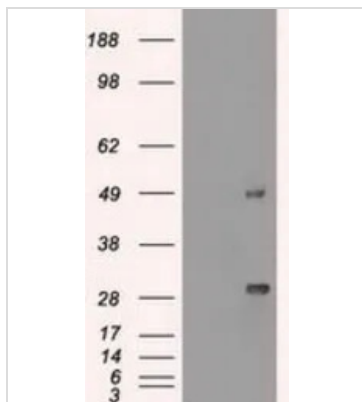
## Note

For laboratory research use only. Not for any clinical, therapeutic, or diagnostic use in humans or animals. Not for animal or human consumption.

Purchasers shall not, and agree not to enable third parties to, analyze, copy, reverse engineer or otherwise attempt to determine the structure or sequence of the product.

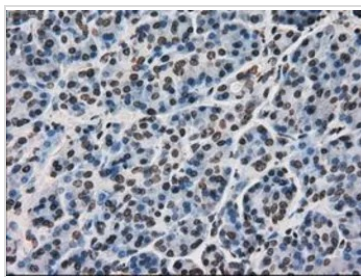


For full product information, images and publications, please visit our [website](#).

**DATA IMAGES**

**GTX84107 WB Image**

WB analysis of HEK293T cells transfected with Ki67 plasmid (Right) or empty vector (Left) for 48 hrs using GTX84107 Ki67 antibody [3D11].

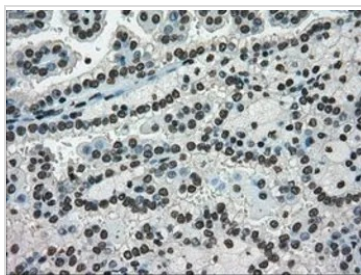
Loading : 5 ug per lane


**GTX84107 IHC-P Image**

IHC-P analysis of pancreas tissue using GTX84107 Ki67 antibody [3D11].

Antigen retrieval : Heat-induced epitope retrieval by 10mM citrate buffer, pH6.0, 100°C for 10min.

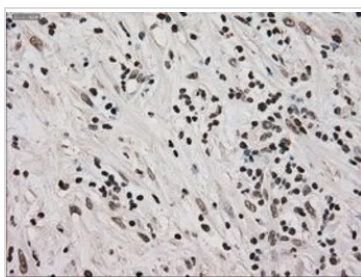
Dilution : 1:50


**GTX84107 IHC-P Image**

IHC-P analysis of kidney carcinoma tissue using GTX84107 Ki67 antibody [3D11].

Antigen retrieval : Heat-induced epitope retrieval by 10mM citrate buffer, pH6.0, 100°C for 10min.

Dilution : 1:50


**GTX84107 IHC-P Image**

IHC-P analysis of pancreas carcinoma tissue using GTX84107 Ki67 antibody [3D11].

Antigen retrieval : Heat-induced epitope retrieval by 10mM citrate buffer, pH6.0, 100°C for 10min.

Dilution : 1:50



For full product information, images and publications, please visit our [website](https://www.genetex.com).