

## MICAL1 antibody [4B1]

Cat. No. GTX84121

Host	Mouse
Clonality	Monoclonal
Isotype	IgG1
Applications	WB, ICC/IF, IHC-P, FCM
Reactivity	Human, Monkey

Package  
100 µl

## Applications

## Application Note

\*Optimal dilutions/concentrations should be determined by the researcher.

Suggested dilution	Recommended dilution
WB	1:2000
ICC/IF	1:100
IHC-P	1:150
FCM	1:100

Not tested in other applications.

Calculated MW 118 kDa. ([Note](#))

## Properties

Form	Liquid
Buffer	PBS, 1% BSA, 50% Glycerol
Preservative	0.02% Sodium azide
Storage	Store as concentrated solution. Centrifuge briefly prior to opening vial. For short-term storage (1-2 weeks), store at 4°C. For long-term storage, aliquot and store at -20°C or below. Avoid multiple freeze-thaw cycles.
Concentration	0.94 mg/ml (Please refer to the vial label for the specific concentration.)
Immunogen	Full length human recombinant protein of human MICAL1 (NP_073602) produced in HEK293T cell.
Purification	Purified by affinity chromatography
Conjugation	Unconjugated

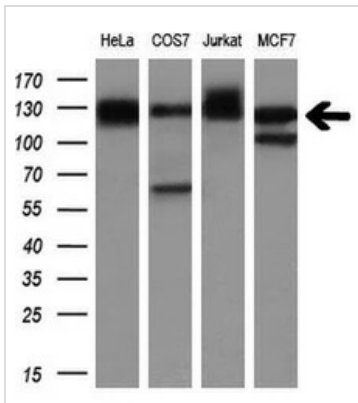
## Note

For laboratory research use only. Not for any clinical, therapeutic, or diagnostic use in humans or animals. Not for animal or human consumption.

Purchasers shall not, and agree not to enable third parties to, analyze, copy, reverse engineer or otherwise attempt to determine the structure or sequence of the product.



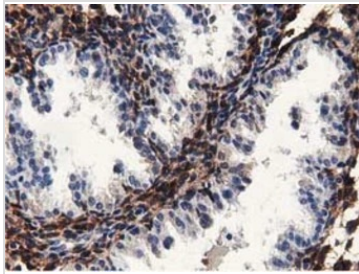
For full product information, images and publications, please visit our [website](#).

**DATA IMAGES**

**GTX84121 WB Image**

WB analysis of various cell lines using GTX84121 MICAL1 antibody [4B1].

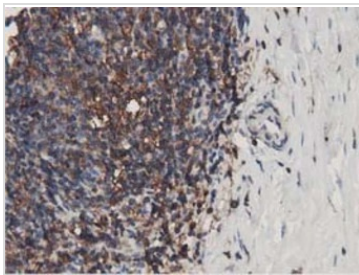
Loading : 10 ug per lane

Dilution : 1:200


**GTX84121 IHC-P Image**

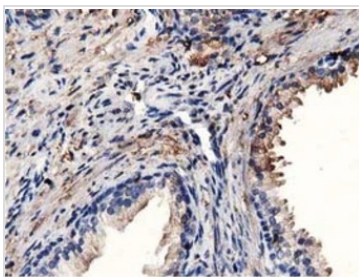
IHC-P analysis of human prostate carcinoma tissue using GTX84121 MICAL1 antibody [4B1].

Antigen retrieval : Heat-induced epitope retrieval by 10mM citrate buffer, pH6.0, 100°C for 10min.


**GTX84121 IHC-P Image**

IHC-P analysis of human lymphoma tissue using GTX84121 MICAL1 antibody [4B1].

Antigen retrieval : Heat-induced epitope retrieval by 10mM citrate buffer, pH6.0, 100°C for 10min.


**GTX84121 IHC-P Image**

IHC-P analysis of human prostate tissue using GTX84121 MICAL1 antibody [4B1].

Antigen retrieval : Heat-induced epitope retrieval by 10mM citrate buffer, pH6.0, 100°C for 10min.



For full product information, images and publications, please visit our [website](https://www.genetex.com).