

MCL1 antibody [10C5]

Cat. No. GTX84132

Host	Mouse
Clonality	Monoclonal
Isotype	IgG1
Application	WB, ICC/IF, IHC-P
Reactivity	Human, Mouse

Package
100 µl

APPLICATION

Application Note

*Optimal dilutions/concentrations should be determined by the researcher.

Suggested dilution	Recommended dilution
WB	1:2000
ICC/IF	1:100
IHC-P	1:50

Not tested in other applications.

Calculated MW 37 kDa. ([Note](#))

PROPERTIES

Form	Liquid
Buffer	PBS, 1% BSA, 50% Glycerol
Preservative	0.02% Sodium azide
Storage	Store as concentrated solution. Centrifuge briefly prior to opening vial. For short-term storage (1-2 weeks), store at 4°C. For long-term storage, aliquot and store at -20°C or below. Avoid multiple freeze-thaw cycles.
Concentration	0.75 mg/ml (Please refer to the vial label for the specific concentration.)
Immunogen	Full length human recombinant protein of human MCL1 (NP_068779) produced in HEK293T cell.
Purification	Purified by affinity chromatography
Conjugation	Unconjugated

Note

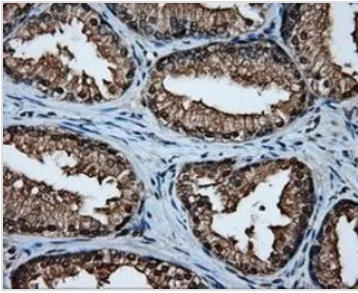
For laboratory research use only. Not for any clinical, therapeutic, or diagnostic use in humans or animals. Not for animal or human consumption.

Purchasers shall not, and agree not to enable third parties to, analyze, copy, reverse engineer or otherwise attempt to determine the structure or sequence of the product.



For full product information, images and publications, please visit our [website](#).

DATA IMAGES

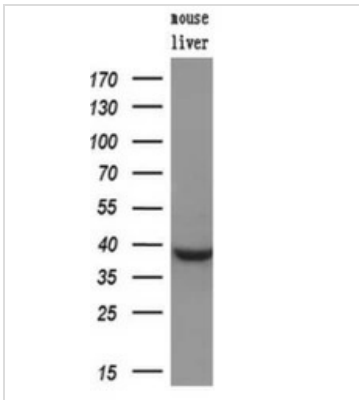


GTx84132 IHC-P Image

IHC-P analysis of prostate tissue using GTx84132 MCL1 antibody [10C5].

Antigen retrieval : Heat-induced epitope retrieval by 10mM citrate buffer, pH6.0, 100°C for 10min.

Dilution : 1:50

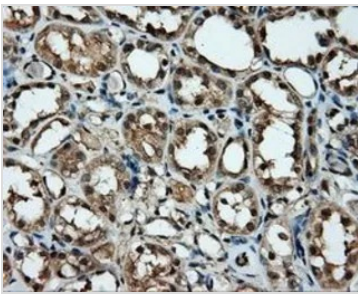


GTx84132 WB Image

WB analysis of mouse liver tissue using GTx84132 MCL1 antibody [10C5].

Loading : 10 ug per lane

Dilution : 1:200

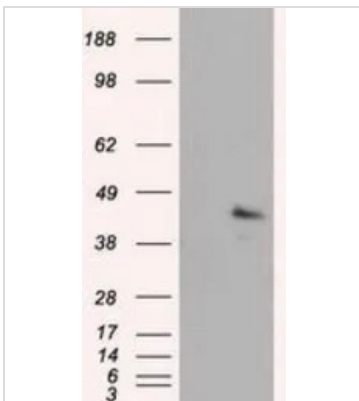


GTx84132 IHC-P Image

IHC-P analysis of kidney tissue using GTx84132 MCL1 antibody [10C5].

Antigen retrieval : Heat-induced epitope retrieval by 10mM citrate buffer, pH6.0, 100°C for 10min.

Dilution : 1:50



GTx84132 WB Image

WB analysis of HEK293T cells transfected with MCL1 plasmid (Right) or empty vector (Left) for 48 hrs using GTx84132 MCL1 antibody [10C5].

Loading : 5 ug per lane



For full product information, images and publications, please visit our [website](https://www.genetex.com).