

MCL1 antibody [10F6]

Cat. No. GTX84140

Host	Mouse
Clonality	Monoclonal
Isotype	IgG1
Application	WB, ICC/IF, IHC-P, FACS
Reactivity	Human

Package
100 µl

APPLICATION

Application Note

*Optimal dilutions/concentrations should be determined by the researcher.

Suggested dilution	Recommended dilution
WB	1:2000
ICC/IF	1:100
IHC-P	1:50
FACS	1:100

Not tested in other applications.

Calculated MW 37 kDa. ([Note](#))

PROPERTIES

Form	Liquid
Buffer	PBS, 1% BSA, 50% Glycerol
Preservative	0.02% Sodium azide
Storage	Store as concentrated solution. Centrifuge briefly prior to opening vial. For short-term storage (1-2 weeks), store at 4°C. For long-term storage, aliquot and store at -20°C or below. Avoid multiple freeze-thaw cycles.
Concentration	1 mg/ml (Please refer to the vial label for the specific concentration.)
Immunogen	Full length human recombinant protein of human MCL1 (NP_068779) produced in HEK293T cell.
Purification	Purified by affinity chromatography
Conjugation	Unconjugated

Note

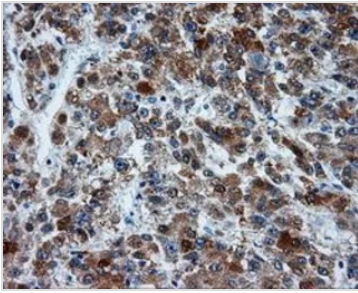
For laboratory research use only. Not for any clinical, therapeutic, or diagnostic use in humans or animals. Not for animal or human consumption.

Purchasers shall not, and agree not to enable third parties to, analyze, copy, reverse engineer or otherwise attempt to determine the structure or sequence of the product.



For full product information, images and publications, please visit our [website](#).

DATA IMAGES

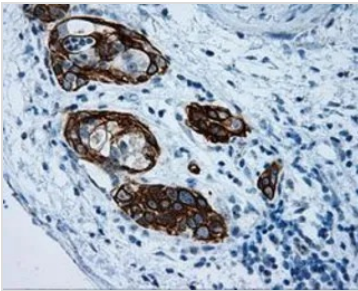


GTX84140 IHC-P Image

IHC-P analysis of liver carcinoma tissue using GTX84140 MCL1 antibody [10F6].

Antigen retrieval : Heat-induced epitope retrieval by 10mM citrate buffer, pH6.0, 100°C for 10min.

Dilution : 1:50

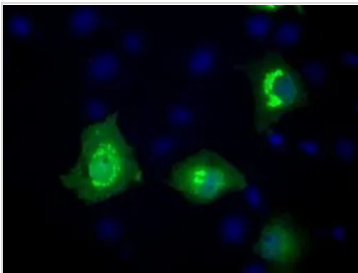


GTX84140 IHC-P Image

IHC-P analysis of pancreas carcinoma tissue using GTX84140 MCL1 antibody [10F6].

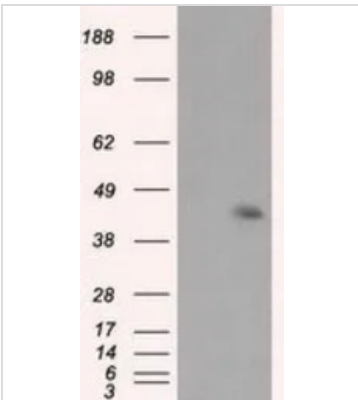
Antigen retrieval : Heat-induced epitope retrieval by 10mM citrate buffer, pH6.0, 100°C for 10min.

Dilution : 1:50



GTX84140 ICC/IF Image

ICC/IF analysis of COS7 cells transiently transfected with MCL1 plasmid using GTX84140 MCL1 antibody [10F6].



GTX84140 WB Image

WB analysis of HEK293T cells transfected with MCL1 plasmid (Right) or empty vector (Left) for 48 hrs using GTX84140 MCL1 antibody [10F6].

Loading : 5 ug per lane



For full product information, images and publications, please visit our [website](https://www.genetex.com).