

p38 gamma antibody [10E1]

Cat. No. GTX84148

Host	Mouse
Clonality	Monoclonal
Isotype	IgG1
Application	WB, IHC-P, FACS
Reactivity	Human

Package
100 µl

APPLICATION

Application Note

*Optimal dilutions/concentrations should be determined by the researcher.

Suggested dilution	Recommended dilution
WB	1:500-1:1000
IHC-P	1:150
FACS	1:100

Not tested in other applications.

Calculated MW 42 kDa. ([Note](#))

PROPERTIES

Form	Liquid
Buffer	PBS, 1% BSA, 50% Glycerol
Preservative	0.02% Sodium azide
Storage	Store as concentrated solution. Centrifuge briefly prior to opening vial. For short-term storage (1-2 weeks), store at 4°C. For long-term storage, aliquot and store at -20°C or below. Avoid multiple freeze-thaw cycles.
Concentration	1 mg/ml (Please refer to the vial label for the specific concentration.)
Immunogen	Full-length protein expressed in 293T cell transfected with human MAPK12 expression vector
Purification	Purified by affinity chromatography From tissue culture supernatant
Conjugation	Unconjugated

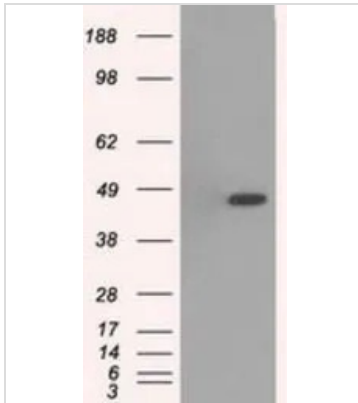
Note

For laboratory research use only. Not for any clinical, therapeutic, or diagnostic use in humans or animals. Not for animal or human consumption.

Purchasers shall not, and agree not to enable third parties to, analyze, copy, reverse engineer or otherwise attempt to determine the structure or sequence of the product.

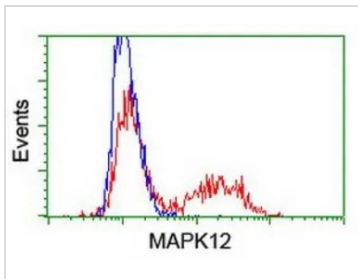


For full product information, images and publications, please visit our [website](#).

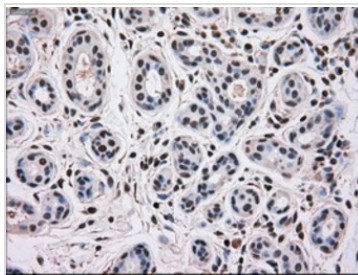
DATA IMAGES

GTX84148 WB Image

WB analysis of HEK293T cells transfected with p38 gamma plasmid (Right) or empty vector (Left) for 48 hrs using GTX84148 p38 gamma antibody [10E1].

Loading : 5 ug per lane

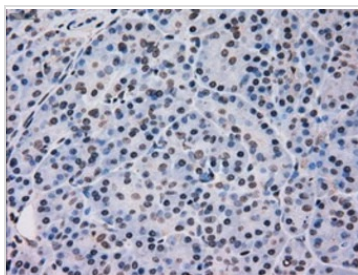

GTX84148 FACS Image

FACS analysis of HEK293T cells transfected with either p38 gamma plasmid(Red) or empty vector control plasmid(Blue) using GTX84148 p38 gamma antibody [10E1].


GTX84148 IHC-P Image

IHC-P analysis of human breast tissue using GTX84148 p38 gamma antibody [10E1].

Antigen retrieval : Heat-induced epitope retrieval by 10mM citrate buffer, pH6.0, 100°C for 10min.


GTX84148 IHC-P Image

IHC-P analysis of human pancreas tissue using GTX84148 p38 gamma antibody [10E1].

Antigen retrieval : Heat-induced epitope retrieval by 10mM citrate buffer, pH6.0, 100°C for 10min.



For full product information, images and publications, please visit our [website](https://www.genetex.com).