

## ERK2 antibody [4D10]

**Cat. No. GTX84153**

<b>Host</b>	Mouse
<b>Clonality</b>	Monoclonal
<b>Isotype</b>	IgG2a
<b>Applications</b>	WB, IP
<b>Reactivity</b>	Human, Rat, Dog, Monkey

**Package**  
100 µl

## Applications

**Application Note**

\*Optimal dilutions/concentrations should be determined by the researcher.

Suggested dilution	Recommended dilution
WB	1:2000
IP	2-4ug/mg

Not tested in other applications.

**Calculated MW** 41 kDa. ([Note](#))

## Properties

<b>Form</b>	Liquid
<b>Buffer</b>	PBS, 1% BSA, 50% Glycerol
<b>Preservative</b>	0.02% Sodium azide
<b>Storage</b>	Store as concentrated solution. Centrifuge briefly prior to opening vial. For short-term storage (1-2 weeks), store at 4°C. For long-term storage, aliquot and store at -20°C or below. Avoid multiple freeze-thaw cycles.
<b>Concentration</b>	1 mg/ml (Please refer to the vial label for the specific concentration.)
<b>Immunogen</b>	Full length human recombinant protein of human MAPK1(NP_620407) produced in HEK293T cell.
<b>Purification</b>	Purified by affinity chromatography From tissue culture supernatant
<b>Conjugation</b>	Unconjugated

**Note**

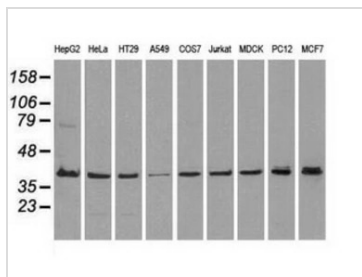
For laboratory research use only. Not for any clinical, therapeutic, or diagnostic use in humans or animals. Not for animal or human consumption.

Purchasers shall not, and agree not to enable third parties to, analyze, copy, reverse engineer or otherwise attempt to determine the structure or sequence of the product.



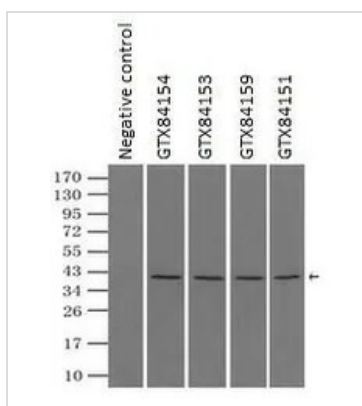
For full product information, images and publications, please visit our [website](#).

DATA IMAGES



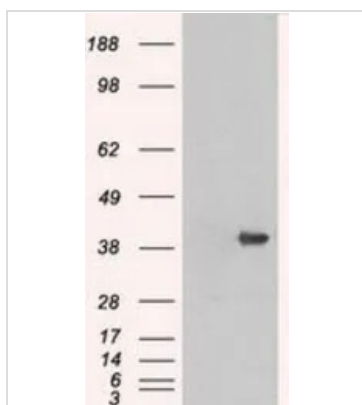
**GTX84153 WB Image**

WB analysis of various cell lines using GTX84153 ERK2 antibody [4D10].  
Loading : 35 ug per lane



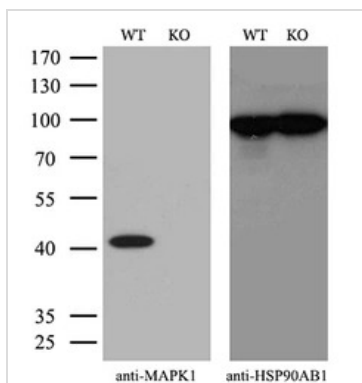
**GTX84153 IP Image**

IP analysis of DDDDK tagged ERK2 overexpressed HEK293T lysate using GTX84153 ERK2 antibody [4D10]. After extensive wash to remove any non-specific binding, the immuno-precipitated products were analyzed with rabbit anti-DDDDK polyclonal antibody.  
IP reaction : 2µg antibody / 500µl cell lysate



**GTX84153 WB Image**

WB analysis of HEK293T cells transfected with ERK2 plasmid (Right) or empty vector (Left) for 48 hrs using GTX84153 ERK2 antibody [4D10].  
Loading : 5 ug per lane



**GTX84153 WB Image**

WB analysis of wild type and ERK2 knock out HeLa cell lysate (10µg per lane) using GTX84153 ERK2 antibody [4D10].  
Dilution : 1:200



For full product information, images and publications, please visit our [website](#).