

SEK1 / MKK4 antibody [4B4]

Cat. No. GTX84161

Host	Mouse
Clonality	Monoclonal
Isotype	IgG2a
Applications	WB, ICC/IF, IHC-P, FCM, IP
Reactivity	Human

Package
100 µl

Applications

Application Note

*Optimal dilutions/concentrations should be determined by the researcher.

Suggested dilution	Recommended dilution
WB	1:2000
ICC/IF	1:100
IHC-P	1:150
FCM	1:100
IP	2ug/500ul

Not tested in other applications.

Calculated MW 44 kDa. ([Note](#))

Properties

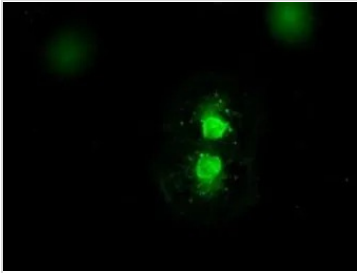
Form	Liquid
Buffer	PBS, 1% BSA, 50% Glycerol
Preservative	0.02% Sodium azide
Storage	Store as concentrated solution. Centrifuge briefly prior to opening vial. For short-term storage (1-2 weeks), store at 4°C. For long-term storage, aliquot and store at -20°C or below. Avoid multiple freeze-thaw cycles.
Concentration	1.09 mg/ml (Please refer to the vial label for the specific concentration.)
Immunogen	Full-length protein expressed in 293T cell transfected with human MAP2K4 expression vector
Purification	Purified by affinity chromatography
Conjugation	Unconjugated

For full product information, images and publications, please visit our [website](#).

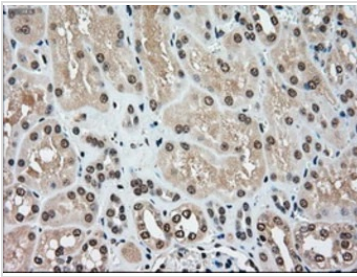
For laboratory research use only. Not for any clinical, therapeutic, or diagnostic use in humans or animals. Not for animal or human consumption.

Note

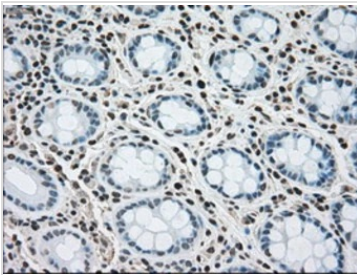
Purchasers shall not, and agree not to enable third parties to, analyze, copy, reverse engineer or otherwise attempt to determine the structure or sequence of the product.

DATA IMAGES

GTX84161 ICC/IF Image

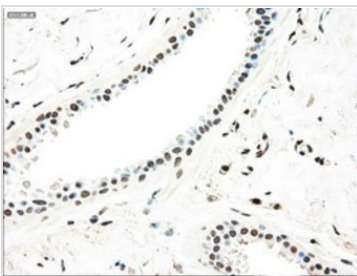
ICC/IF analysis of COS7 cells transiently transfected with SEK1 / MKK4 plasmid using GTX84161 SEK1 / MKK4 antibody [4B4].


GTX84161 IHC-P Image

IHC-P analysis of human kidney tissue using GTX84161 SEK1 / MKK4 antibody [4B4].
Antigen retrieval : Heat-induced epitope retrieval by 10mM citrate buffer, pH6.0, 100°C for 10min.


GTX84161 IHC-P Image

IHC-P analysis of human colon tissue using GTX84161 SEK1 / MKK4 antibody [4B4].
Antigen retrieval : Heat-induced epitope retrieval by 10mM citrate buffer, pH6.0, 100°C for 10min.


GTX84161 IHC-P Image

IHC-P analysis of human breast tissue using GTX84161 SEK1 / MKK4 antibody [4B4].
Antigen retrieval : Heat-induced epitope retrieval by 10mM citrate buffer, pH6.0, 100°C for 10min.



For full product information, images and publications, please visit our [website](https://www.genetex.com).