

MEK2 antibody [8G6]

Cat. No. GTX84165

Host	Mouse
Clonality	Monoclonal
Isotype	IgG1
Applications	WB, IHC-P, FCM
Reactivity	Human, Mouse, Monkey

Package
100 µl

Applications

Application Note

*Optimal dilutions/concentrations should be determined by the researcher.

Suggested dilution	Recommended dilution
WB	1:2000
IHC-P	1:150
FCM	1:100

Not tested in other applications.

Calculated MW 44 kDa. ([Note](#))

Properties

Form	Liquid
Buffer	PBS, 1% BSA, 50% Glycerol
Preservative	0.02% Sodium azide
Storage	Store as concentrated solution. Centrifuge briefly prior to opening vial. For short-term storage (1-2 weeks), store at 4°C. For long-term storage, aliquot and store at -20°C or below. Avoid multiple freeze-thaw cycles.
Concentration	1 mg/ml (Please refer to the vial label for the specific concentration.)
Immunogen	Full-length protein expressed in 293T cell transfected with human MAP2K2 expression vector
Purification	Purified by affinity chromatography From tissue culture supernatant
Conjugation	Unconjugated

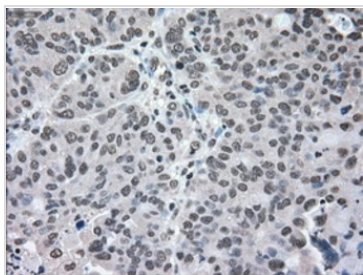
Note For laboratory research use only. Not for any clinical, therapeutic, or diagnostic use in humans or animals. Not for animal or human consumption.

Purchasers shall not, and agree not to enable third parties to, analyze, copy, reverse engineer or otherwise attempt to determine the structure or sequence of the product.

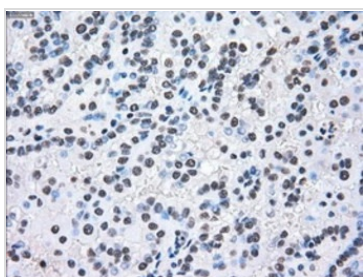


For full product information, images and publications, please visit our [website](#).

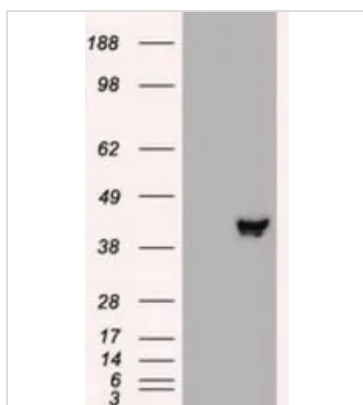
DATA IMAGES

**GTX84165 IHC-P Image**

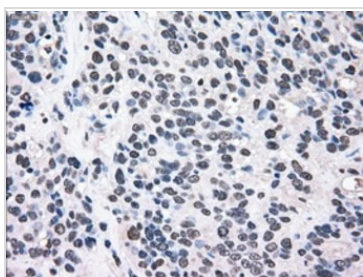
IHC-P analysis of human endometrium adenocarcinoma tissue using GTX84165 MEK2 antibody [8G6].
Antigen retrieval : Heat-induced epitope retrieval by 10mM citrate buffer, pH6.0, 100°C for 10min.

**GTX84165 IHC-P Image**

IHC-P analysis of human kidney carcinoma tissue using GTX84165 MEK2 antibody [8G6].
Antigen retrieval : Heat-induced epitope retrieval by 10mM citrate buffer, pH6.0, 100°C for 10min.

**GTX84165 WB Image**

WB analysis of HEK293T cells transfected with MEK2 plasmid (Right) or empty vector (Left) for 48 hrs using GTX84165 MEK2 antibody [8G6].
Loading : 5 ug per lane

**GTX84165 IHC-P Image**

IHC-P analysis of human bladder carcinoma tissue using GTX84165 MEK2 antibody [8G6].
Antigen retrieval : Heat-induced epitope retrieval by 10mM citrate buffer, pH6.0, 100°C for 10min.



For full product information, images and publications, please visit our [website](#).