

## MEK2 antibody [5F6]

Cat. No. GTX84166

Host	Mouse
Clonality	Monoclonal
Isotype	IgG1
Applications	WB, IHC-P, FCM
Reactivity	Human, Monkey

Package  
100 µl

## Applications

## Application Note

\*Optimal dilutions/concentrations should be determined by the researcher.

Suggested dilution	Recommended dilution
WB	1:1000
IHC-P	1:150
FCM	1:100

Not tested in other applications.

Calculated MW 44 kDa. ( [Note](#) )

## Properties

Form	Liquid
Buffer	PBS, 1% BSA, 50% Glycerol
Preservative	0.02% Sodium azide
Storage	Store as concentrated solution. Centrifuge briefly prior to opening vial. For short-term storage (1-2 weeks), store at 4°C. For long-term storage, aliquot and store at -20°C or below. Avoid multiple freeze-thaw cycles.
Concentration	0.95 mg/ml (Please refer to the vial label for the specific concentration.)
Immunogen	Full-length protein expressed in 293T cell transfected with human MAP2K2 expression vector
Purification	Purified by affinity chromatography
Conjugation	Unconjugated

## Note

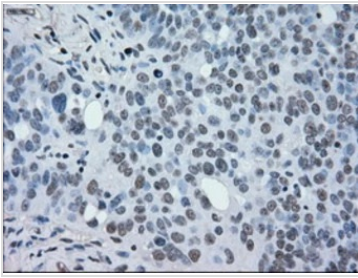
For laboratory research use only. Not for any clinical, therapeutic, or diagnostic use in humans or animals. Not for animal or human consumption.

Purchasers shall not, and agree not to enable third parties to, analyze, copy, reverse engineer or otherwise attempt to determine the structure or sequence of the product.



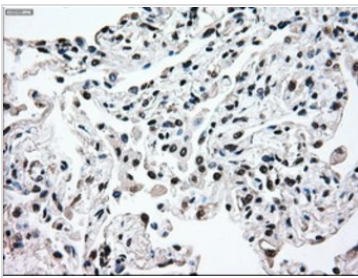
For full product information, images and publications, please visit our [website](#).

## DATA IMAGES



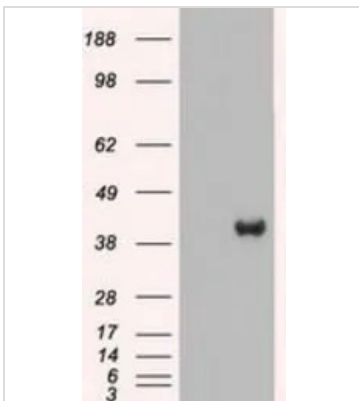
### GTX84166 IHC-P Image

IHC-P analysis of human ovary adenocarcinoma tissue using GTX84166 MEK2 antibody [5F6].  
Antigen retrieval : Heat-induced epitope retrieval by 10mM citrate buffer, pH6.0, 100°C for 10min.



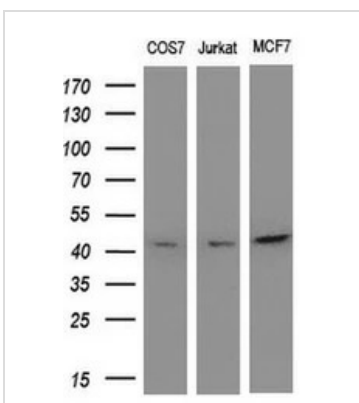
### GTX84166 IHC-P Image

IHC-P analysis of human lung tissue using GTX84166 MEK2 antibody [5F6].  
Antigen retrieval : Heat-induced epitope retrieval by 10mM citrate buffer, pH6.0, 100°C for 10min.



### GTX84166 WB Image

WB analysis of HEK293T cells transfected with MEK2 plasmid (Right) or empty vector (Left) for 48 hrs using GTX84166 MEK2 antibody [5F6].  
Loading : 5 ug per lane



### GTX84166 WB Image

WB analysis of various cell lines using GTX84166 MEK2 antibody [5F6].  
Loading : 10 ug per lane  
Dilution : 1:200



For full product information, images and publications, please visit our [website](https://www.genetex.com).