

LTA4H antibody [9C5]

Cat. No. GTX84176

Host	Mouse
Clonality	Monoclonal
Isotype	IgG2b
Applications	WB, IHC-P, IP
Reactivity	Human, Mouse, Dog, Monkey

Package
100 µl

Applications

Application Note

*Optimal dilutions/concentrations should be determined by the researcher.

Suggested dilution	Recommended dilution
WB	1:200
IHC-P	1:100-1:200
IP	Assay dependent

Not tested in other applications.

Calculated MW 69 kDa. ([Note](#))

Properties

Form	Liquid
Buffer	PBS, 1% BSA, 50% Glycerol
Preservative	0.02% Sodium azide
Storage	Store as concentrated solution. Centrifuge briefly prior to opening vial. For short-term storage (1-2 weeks), store at 4°C. For long-term storage, aliquot and store at -20°C or below. Avoid multiple freeze-thaw cycles.
Concentration	1 mg/ml (Please refer to the vial label for the specific concentration.)
Immunogen	Full-length protein expressed in 293T cell transfected with human LTA4H expression vector
Purification	Purified by affinity chromatography From tissue culture supernatant
Conjugation	Unconjugated

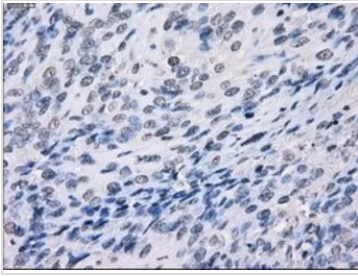
Note For laboratory research use only. Not for any clinical, therapeutic, or diagnostic use in humans or animals. Not for animal or human consumption.

Purchasers shall not, and agree not to enable third parties to, analyze, copy, reverse engineer or otherwise attempt to determine the structure or sequence of the product.



For full product information, images and publications, please visit our [website](#).

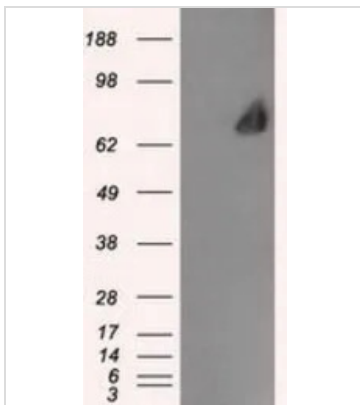
DATA IMAGES

**GTX84176 IHC-P Image**

IHC-P analysis of bladder carcinoma tissue using GTX84176 LTA4H antibody [9C5].

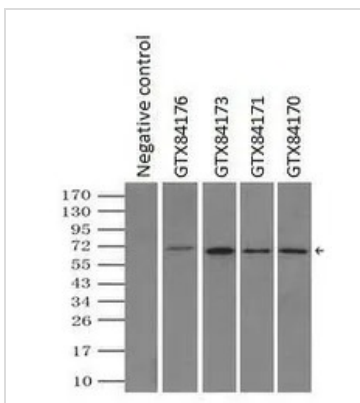
Antigen retrieval : Heat-induced epitope retrieval by 10mM citrate buffer, pH6.0, 100°C for 10min.

Dilution : 1:50

**GTX84176 WB Image**

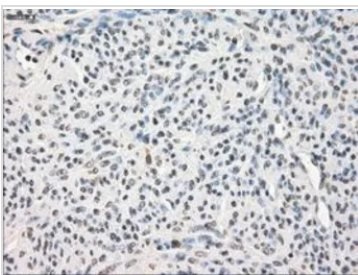
WB analysis of HEK293T cells transfected with LTA4H plasmid (Right) or empty vector (Left) for 48 hrs using GTX84176 LTA4H antibody [9C5].

Loading : 5 ug per lane

**GTX84176 IP Image**

IP analysis of DDDDK tagged LTA4H overexpressed HEK293T lysate using GTX84176 LTA4H antibody [9C5]. After extensive wash to remove any non-specific binding, the immuno-precipitated products were analyzed with rabbit anti-DDDDK polyclonal antibody.

IP reaction : 2µg antibody / 500µl cell lysate

**GTX84176 IHC-P Image**

IHC-P analysis of endometrium tissue using GTX84176 LTA4H antibody [9C5].

Antigen retrieval : Heat-induced epitope retrieval by 10mM citrate buffer, pH6.0, 100°C for 10min.

Dilution : 1:50



For full product information, images and publications, please visit our [website](#).