

Endothelial Lipase / LIPG antibody [4A8]

Cat. No. GTX84191

Host	Mouse
Clonality	Monoclonal
Isotype	IgG2a
Applications	WB, ICC/IF, IHC-P, FCM, IP
Reactivity	Human, Mouse, Monkey

Package
100 µl

Applications

Application Note

*Optimal dilutions/concentrations should be determined by the researcher.

Suggested dilution	Recommended dilution
WB	1:2000
ICC/IF	1:100
IHC-P	1:50
FCM	1:100
IP	2ug/500ul

Not tested in other applications.

Calculated MW 57 kDa. ([Note](#))

Properties

Form	Liquid
Buffer	PBS, 1% BSA, 50% Glycerol
Preservative	0.02% Sodium azide
Storage	Store as concentrated solution. Centrifuge briefly prior to opening vial. For short-term storage (1-2 weeks), store at 4°C. For long-term storage, aliquot and store at -20°C or below. Avoid multiple freeze-thaw cycles.
Concentration	0.87 mg/ml (Please refer to the vial label for the specific concentration.)
Immunogen	Full length human recombinant protein of human LIPG (NP_006024) produced in HEK293T cell.
Purification	Purified by affinity chromatography
Conjugation	Unconjugated

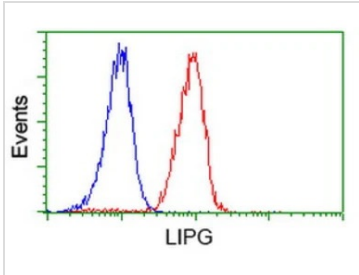


For full product information, images and publications, please visit our [website](#).

For laboratory research use only. Not for any clinical, therapeutic, or diagnostic use in humans or animals. Not for animal or human consumption.

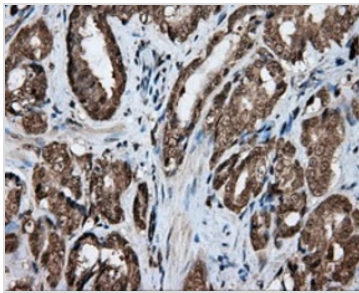
Note
 Purchasers shall not, and agree not to enable third parties to, analyze, copy, reverse engineer or otherwise attempt to determine the structure or sequence of the product.

DATA IMAGES



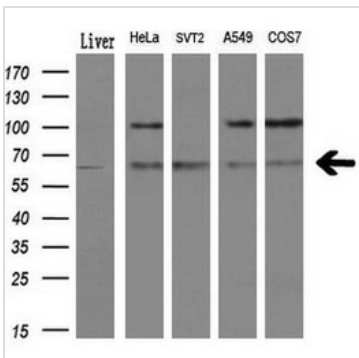
GTX84191 FCM Image

FACS analysis of Jurkat cells using GTX84191 Endothelial Lipase / LIPG antibody [4A8].
 Red : Primary antibody
 Blue : Negative control antibody



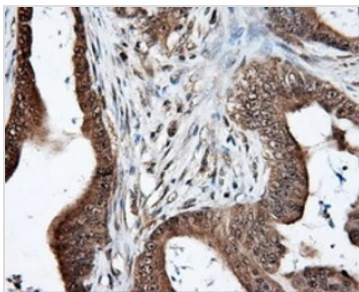
GTX84191 IHC-P Image

IHC-P analysis of human prostate carcinoma tissue using GTX84191 Endothelial Lipase / LIPG antibody [4A8].
 Antigen retrieval : Heat-induced epitope retrieval by 10mM citrate buffer, pH6.0, 100°C for 10min.



GTX84191 WB Image

WB analysis of various cell lines and human liver tissue lysate using GTX84191 Endothelial Lipase / LIPG antibody [4A8].
 Loading : 10 ug per lane
 Dilution : 1:200



GTX84191 IHC-P Image

IHC-P analysis of human colon adenocarcinoma tissue using GTX84191 Endothelial Lipase / LIPG antibody [4A8].
 Antigen retrieval : Heat-induced epitope retrieval by 10mM citrate buffer, pH6.0, 100°C for 10min.



For full product information, images and publications, please visit our [website](#).