

Endothelial Lipase / LIPG antibody [2A5]

Cat. No. GTX84195

Host	Mouse
Clonality	Monoclonal
Isotype	IgG1
Applications	WB, ICC/IF, IHC-P, FCM
Reactivity	Human, Mouse, Dog, Monkey

Package
100 µl

Applications

Application Note

*Optimal dilutions/concentrations should be determined by the researcher.

Suggested dilution	Recommended dilution
WB	1:1000
ICC/IF	1:100
IHC-P	1:50
FCM	1:100

Not tested in other applications.

Calculated MW 57 kDa. ([Note](#))

Properties

Form	Liquid
Buffer	PBS, 1% BSA, 50% Glycerol
Preservative	0.02% Sodium azide
Storage	Store as concentrated solution. Centrifuge briefly prior to opening vial. For short-term storage (1-2 weeks), store at 4°C. For long-term storage, aliquot and store at -20°C or below. Avoid multiple freeze-thaw cycles.
Concentration	1 mg/ml (Please refer to the vial label for the specific concentration.)
Immunogen	Full length human recombinant protein of human LIPG (NP_006024) produced in HEK293T cell.
Purification	Purified by affinity chromatography From tissue culture supernatant
Conjugation	Unconjugated

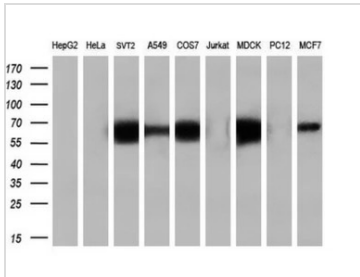


For full product information, images and publications, please visit our [website](#).

For laboratory research use only. Not for any clinical, therapeutic, or diagnostic use in humans or animals. Not for animal or human consumption.

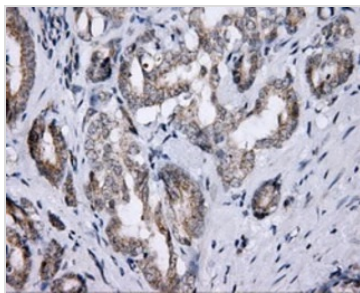
Note
 Purchasers shall not, and agree not to enable third parties to, analyze, copy, reverse engineer or otherwise attempt to determine the structure or sequence of the product.

DATA IMAGES



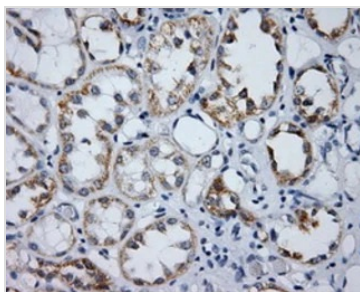
GTX84195 WB Image

WB analysis of various cell lines using GTX84195 Endothelial Lipase / LIPG antibody [2A5].
 Loading : 35 ug per lane
 Dilution : 1:200



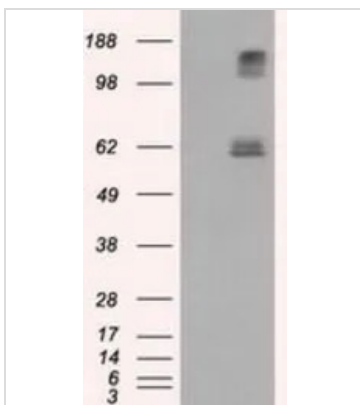
GTX84195 IHC-P Image

IHC-P analysis of human prostate carcinoma tissue using GTX84195 Endothelial Lipase / LIPG antibody [2A5].
 Antigen retrieval : Heat-induced epitope retrieval by 10mM citrate buffer, pH6.0, 100°C for 10min.



GTX84195 IHC-P Image

IHC-P analysis of human kidney tissue using GTX84195 Endothelial Lipase / LIPG antibody [2A5].
 Antigen retrieval : Heat-induced epitope retrieval by 10mM citrate buffer, pH6.0, 100°C for 10min.



GTX84195 WB Image

WB analysis of HEK293T cells transfected with Endothelial Lipase / LIPG plasmid (Right) or empty vector (Left) for 48 hrs using GTX84195 Endothelial Lipase / LIPG antibody [2A5].
 Loading : 5 ug per lane



For full product information, images and publications, please visit our [website](#).