

## LEMD3 antibody [3H1]

**Cat. No. GTX84221**

<b>Host</b>	Mouse
<b>Clonality</b>	Monoclonal
<b>Isotype</b>	IgG1
<b>Applications</b>	WB, ICC/IF, FCM, IP
<b>Reactivity</b>	Human, Rat, Dog, Monkey

**Package**  
100 µl

## Applications

**Application Note**

\*Optimal dilutions/concentrations should be determined by the researcher.

Suggested dilution	Recommended dilution
WB	1:1000
ICC/IF	1:100
FCM	1:100
IP	2-4ug/mg

Not tested in other applications.

**Calculated MW** 100 kDa. ([Note](#))

## Properties

<b>Form</b>	Liquid
<b>Buffer</b>	PBS, 1% BSA, 50% Glycerol
<b>Preservative</b>	0.02% Sodium azide
<b>Storage</b>	Store as concentrated solution. Centrifuge briefly prior to opening vial. For short-term storage (1-2 weeks), store at 4°C. For long-term storage, aliquot and store at -20°C or below. Avoid multiple freeze-thaw cycles.
<b>Concentration</b>	1 mg/ml (Please refer to the vial label for the specific concentration.)
<b>Immunogen</b>	Full length human recombinant protein of human LEMD3 (NP_055134) produced in HEK293T cell.
<b>Purification</b>	Purified by affinity chromatography From tissue culture supernatant
<b>Conjugation</b>	Unconjugated



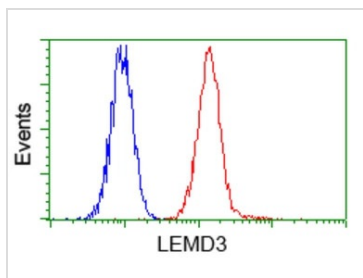
For full product information, images and publications, please visit our [website](#).

For laboratory research use only. Not for any clinical, therapeutic, or diagnostic use in humans or animals. Not for animal or human consumption.

**Note**

Purchasers shall not, and agree not to enable third parties to, analyze, copy, reverse engineer or otherwise attempt to determine the structure or sequence of the product.

DATA IMAGES

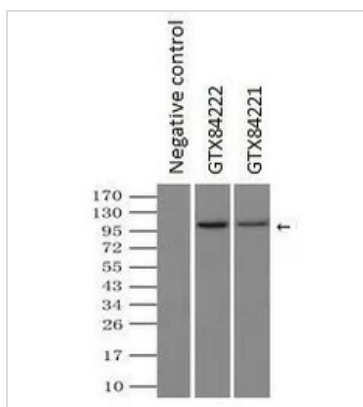


**GTX84221 FCM Image**

FACS analysis of HeLa cells using GTX84221 LEMD3 antibody [3H1].

Red : Primary antibody

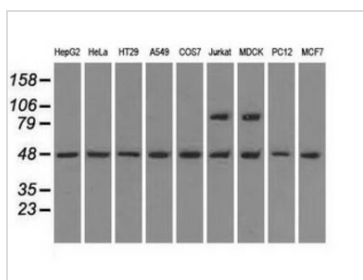
Blue : Negative control antibody



**GTX84221 IP Image**

IP analysis of DDDD tagged LEMD3 overexpressed HEK293T lysate using GTX84221 LEMD3 antibody [3H1]. After extensive wash to remove any non-specific binding, the immuno-precipitated products were analyzed with rabbit anti-DDDDK polyclonal antibody.

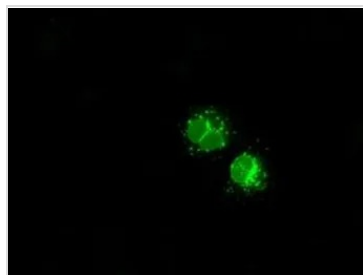
IP reaction : 2µg antibody / 500µl cell lysate



**GTX84221 WB Image**

WB analysis of various cell lines using GTX84221 LEMD3 antibody [3H1].

Loading : 35 ug per lane



**GTX84221 ICC/IF Image**

ICC/IF analysis of COS7 cells transiently transfected with LEMD3 plasmid using GTX84221 LEMD3 antibody [3H1].



For full product information, images and publications, please visit our [website](#).