

LDHA antibody [2D11]

Cat. No. GTX84227

Host	Mouse
Clonality	Monoclonal
Isotype	IgG1
Application	WB, IHC-P, IP
Reactivity	Human, Mouse, Rat, Dog, Monkey

Package
100 µl

APPLICATION

Application Note

*Optimal dilutions/concentrations should be determined by the researcher.

Suggested dilution	Recommended dilution
WB	1:500
IHC-P	1:50
IP	2ug/500ul

Not tested in other applications.

Calculated MW 37 kDa. ([Note](#))

PROPERTIES

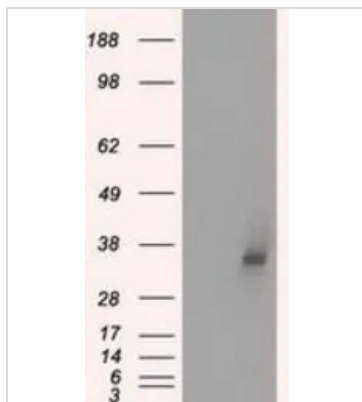
Form	Liquid
Buffer	PBS, 1% BSA, 50% Glycerol
Preservative	0.02% Sodium azide
Storage	Store as concentrated solution. Centrifuge briefly prior to opening vial. For short-term storage (1-2 weeks), store at 4°C. For long-term storage, aliquot and store at -20°C or below. Avoid multiple freeze-thaw cycles.
Concentration	1 mg/ml (Please refer to the vial label for the specific concentration.)
Immunogen	Full length human recombinant protein of human LDHA (NP_005557) produced in HEK293T cell.
Purification	Purified by affinity chromatography From tissue culture supernatant
Conjugation	Unconjugated

Note For laboratory research use only. Not for any clinical, therapeutic, or diagnostic use in humans or animals. Not for animal or human consumption.

Purchasers shall not, and agree not to enable third parties to, analyze, copy, reverse engineer or otherwise attempt to determine the structure or sequence of the product.

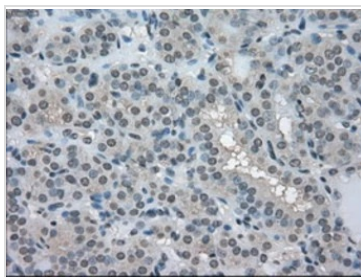


For full product information, images and publications, please visit our [website](#).

DATA IMAGES

GTX84227 WB Image

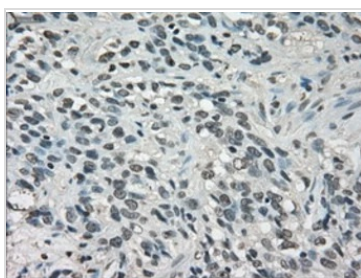
WB analysis of HEK293T cells transfected with LDHA plasmid (Right) or empty vector (Left) for 48 hrs using GTX84227 LDHA antibody [2D11].

Loading : 5 ug per lane


GTX84227 IHC-P Image

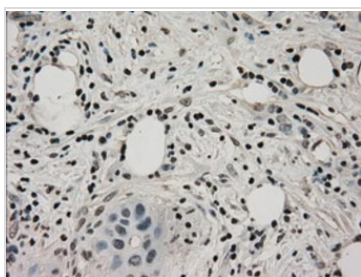
IHC-P analysis of human thyroid carcinoma tissue using GTX84227 LDHA antibody [2D11].

Antigen retrieval : Heat-induced epitope retrieval by 10mM citrate buffer, pH6.0, 100°C for 10min.


GTX84227 IHC-P Image

IHC-P analysis of human bladder carcinoma tissue using GTX84227 LDHA antibody [2D11].

Antigen retrieval : Heat-induced epitope retrieval by 10mM citrate buffer, pH6.0, 100°C for 10min.


GTX84227 IHC-P Image

IHC-P analysis of human pancreas carcinoma tissue using GTX84227 LDHA antibody [2D11].

Antigen retrieval : Heat-induced epitope retrieval by 10mM citrate buffer, pH6.0, 100°C for 10min.



For full product information, images and publications, please visit our [website](https://www.genetex.com).