

Cytokeratin 8 antibody [1B9]

Cat. No. GTX84247

Host	Mouse
Clonality	Monoclonal
Isotype	IgG2a
Applications	WB, ICC/IF
Reactivity	Human, Dog, Monkey

Package
100 µl

Applications

Application Note

*Optimal dilutions/concentrations should be determined by the researcher.

Suggested dilution	Recommended dilution
WB	1:2500-1:5000
ICC/IF	1:100

Not tested in other applications.

Calculated MW 54 kDa. ([Note](#))

Properties

Form	Liquid
Buffer	PBS, 1% BSA, 50% Glycerol
Preservative	0.02% Sodium azide
Storage	Store as concentrated solution. Centrifuge briefly prior to opening vial. For short-term storage (1-2 weeks), store at 4°C. For long-term storage, aliquot and store at -20°C or below. Avoid multiple freeze-thaw cycles.
Concentration	1 mg/ml (Please refer to the vial label for the specific concentration.)
Immunogen	Human recombinant protein fragment corresponding to amino acids 91-381 of human CK8 (NP_002264) produced in E.coli.
Purification	Purified by affinity chromatography From tissue culture supernatant
Conjugation	Unconjugated

Note

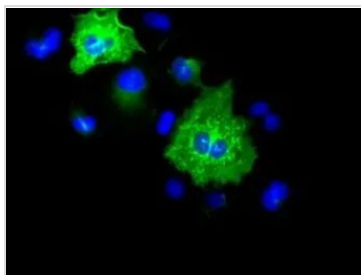
For laboratory research use only. Not for any clinical, therapeutic, or diagnostic use in humans or animals. Not for animal or human consumption.

Purchasers shall not, and agree not to enable third parties to, analyze, copy, reverse engineer or otherwise attempt to determine the structure or sequence of the product.



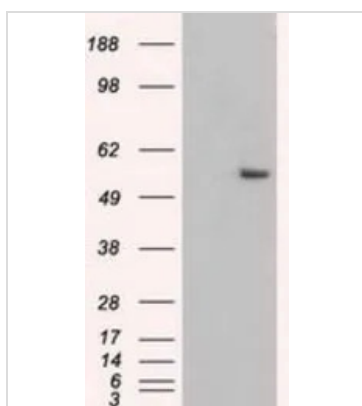
For full product information, images and publications, please visit our [website](#).

DATA IMAGES



GTX84247 ICC/IF Image

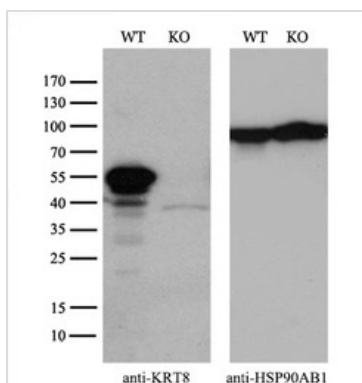
ICC/IF analysis of COS7 cells transiently transfected with Cytokeratin 8 plasmid using GTX84247 Cytokeratin 8 antibody [1B9].



GTX84247 WB Image

WB analysis of HEK293T cells transfected with Cytokeratin 8 plasmid (Right) or empty vector (Left) for 48 hrs using GTX84247 Cytokeratin 8 antibody [1B9].

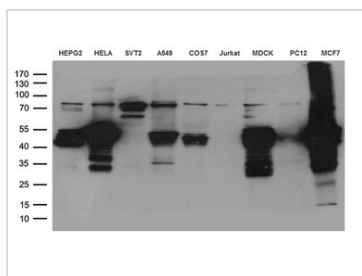
Loading : 5 ug per lane



GTX84247 WB Image

WB analysis of wild type and Cytokeratin 8 knock out HeLa cell lysate(10µg per lane) using GTX84247 Cytokeratin 8 antibody [1B9].

Dilution : 1:2000



GTX84247 WB Image

WB analysis of various cell lines using GTX84247 Cytokeratin 8 antibody [1B9].

Loading : 35 ug per lane

Dilution : 1:500



For full product information, images and publications, please visit our [website](http://www.genetex.com).