

Cytokeratin 8 antibody [4D12]

Cat. No. GTX84248

Host	Mouse
Clonality	Monoclonal
Isotype	IgG2a
Applications	WB, ICC/IF, IHC-P
Reactivity	Human, Dog, Monkey

Package
100 µl

Applications

Application Note

*Optimal dilutions/concentrations should be determined by the researcher.

Suggested dilution	Recommended dilution
WB	1:1000
ICC/IF	1:100
IHC-P	1:50

Not tested in other applications.

Calculated MW 54 kDa. ([Note](#))

Properties

Form	Liquid
Buffer	PBS, 1% BSA, 50% Glycerol
Preservative	0.02% Sodium azide
Storage	Store as concentrated solution. Centrifuge briefly prior to opening vial. For short-term storage (1-2 weeks), store at 4°C. For long-term storage, aliquot and store at -20°C or below. Avoid multiple freeze-thaw cycles.
Concentration	1 mg/ml (Please refer to the vial label for the specific concentration.)
Immunogen	Human recombinant protein fragment corresponding to amino acids 91-381 of human CK8 (NP_002264) produced in E.coli.
Purification	Purified by affinity chromatography From tissue culture supernatant
Conjugation	Unconjugated



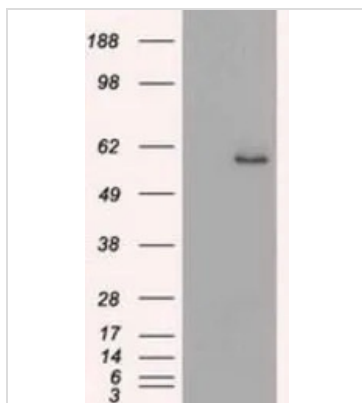
For full product information, images and publications, please visit our [website](#).

For laboratory research use only. Not for any clinical, therapeutic, or diagnostic use in humans or animals. Not for animal or human consumption.

Note

Purchasers shall not, and agree not to enable third parties to, analyze, copy, reverse engineer or otherwise attempt to determine the structure or sequence of the product.

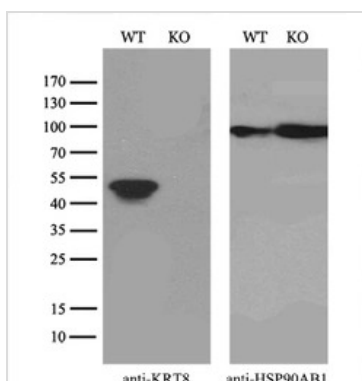
DATA IMAGES



GTx84248 WB Image

WB analysis of HEK293T cells transfected with Cytokeratin 8 plasmid (Right) or empty vector (Left) for 48 hrs using GTx84248 Cytokeratin 8 antibody [4D12].

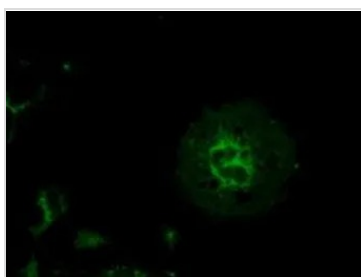
Loading : 5 ug per lane



GTx84248 WB Image

WB analysis of wild type and Cytokeratin 8 knock out HeLa cell lysate (10 µg per lane) using GTx84248 Cytokeratin 8 antibody [4D12].

Dilution : 1:1000



GTx84248 ICC/IF Image

ICC/IF analysis of COS7 cells transiently transfected with Cytokeratin 8 plasmid using GTx84248 Cytokeratin 8 antibody [4D12].



For full product information, images and publications, please visit our [website](#).