

Cytokeratin 19 antibody [3F8]

Cat. No. GTX84251

| | |
|--------------|-------------------------|
| Host | Mouse |
| Clonality | Monoclonal |
| Isotype | IgG1 |
| Applications | WB, ICC/IF, IHC-P |
| Reactivity | Human, Rat, Dog, Monkey |

Package
100 µl

Applications

Application Note

*Optimal dilutions/concentrations should be determined by the researcher.

| Suggested dilution | Recommended dilution |
|--------------------|----------------------|
| WB | 1:1000 |
| ICC/IF | 1:100 |
| IHC-P | 1:50-1:150 |

Not tested in other applications.

Calculated MW 44 kDa. ([Note](#))

Properties

| | |
|---------------|--|
| Form | Liquid |
| Buffer | PBS, 1% BSA, 50% Glycerol |
| Preservative | 0.02% Sodium azide |
| Storage | Store as concentrated solution. Centrifuge briefly prior to opening vial. For short-term storage (1-2 weeks), store at 4°C. For long-term storage, aliquot and store at -20°C or below. Avoid multiple freeze-thaw cycles. |
| Concentration | 0.15 mg/ml (Please refer to the vial label for the specific concentration.) |
| Immunogen | Recombinant fragment expressed in E.coli corresponding to amino acids 240-390 of human CK19 |
| Purification | Purified by affinity chromatography |
| Conjugation | Unconjugated |

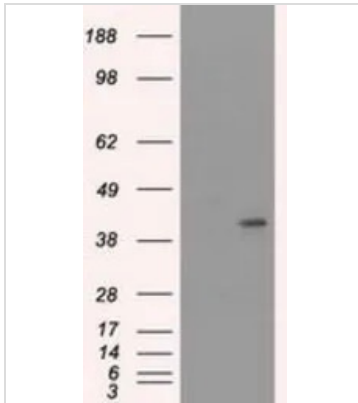
Note

For laboratory research use only. Not for any clinical, therapeutic, or diagnostic use in humans or animals. Not for animal or human consumption.

Purchasers shall not, and agree not to enable third parties to, analyze, copy, reverse engineer or otherwise attempt to determine the structure or sequence of the product.

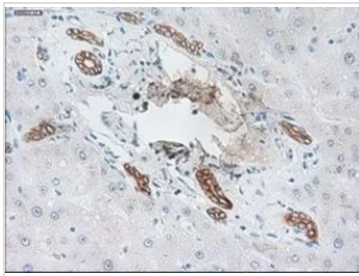


For full product information, images and publications, please visit our [website](#).

DATA IMAGES

GTX84251 WB Image

WB analysis of HEK293T cells transfected with Cytokeratin 19 plasmid (Right) or empty vector (Left) for 48 hrs using GTX84251 Cytokeratin 19 antibody [3F8].

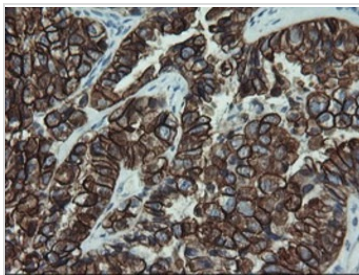
Loading : 5 ug per lane


GTX84251 IHC-P Image

IHC-P analysis of liver tissue using GTX84251 Cytokeratin 19 antibody [3F8].

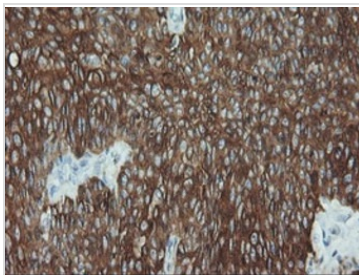
Antigen retrieval : Heat-induced epitope retrieval by 10mM citrate buffer, pH6.0, 100°C for 10min.

Dilution : 1:50


GTX84251 IHC-P Image

IHC-P analysis of human ovary adenocarcinoma tissue using GTX84251 Cytokeratin 19 antibody [3F8].

Dilution : 1:150


GTX84251 IHC-P Image

IHC-P analysis of human bladder carcinoma tissue using GTX84251 Cytokeratin 19 antibody [3F8].

Dilution : 1:150



For full product information, images and publications, please visit our [website](https://www.genetex.com).