

Cytokeratin 18 antibody [5E8]

Cat. No. GTX84255

Host	Mouse
Clonality	Monoclonal
Isotype	IgG2b
Applications	WB, IHC-P
Reactivity	Human, Dog, Monkey

Package
100 µl

Applications

Application Note

*Optimal dilutions/concentrations should be determined by the researcher.

Suggested dilution	Recommended dilution
WB	1:1000
IHC-P	1:50

Not tested in other applications.

Calculated MW 48 kDa. ([Note](#))

Properties

Form	Liquid
Buffer	PBS, 1% BSA, 50% Glycerol
Preservative	0.02% Sodium azide
Storage	Store as concentrated solution. Centrifuge briefly prior to opening vial. For short-term storage (1-2 weeks), store at 4°C. For long-term storage, aliquot and store at -20°C or below. Avoid multiple freeze-thaw cycles.
Concentration	0.26 mg/ml (Please refer to the vial label for the specific concentration.)
Immunogen	Human recombinant protein fragment corresponding to amino acids 69-372 of human CK18 (NP_000215) produced in E.coli.
Purification	Purified by affinity chromatography
Conjugation	Unconjugated

Note

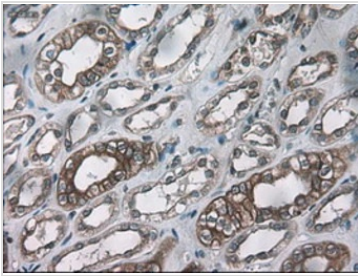
For laboratory research use only. Not for any clinical, therapeutic, or diagnostic use in humans or animals. Not for animal or human consumption.

Purchasers shall not, and agree not to enable third parties to, analyze, copy, reverse engineer or otherwise attempt to determine the structure or sequence of the product.



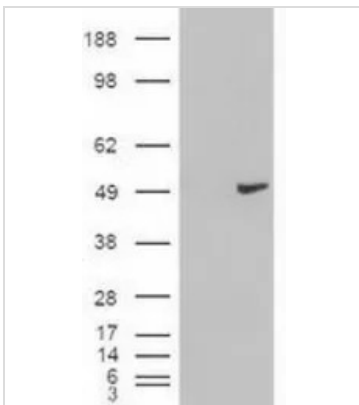
For full product information, images and publications, please visit our [website](#).

DATA IMAGES



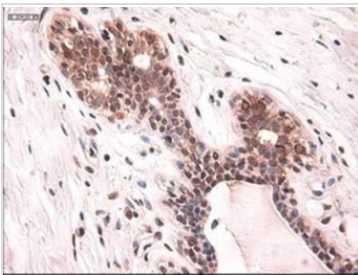
GTX84255 IHC-P Image

IHC-P analysis of human kidney tissue using GTX84255 Cytokeratin 18 antibody [5E8].
Antigen retrieval : Heat-induced epitope retrieval by 10mM citrate buffer, pH6.0, 100°C for 10min.



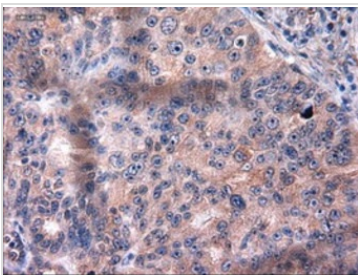
GTX84255 WB Image

WB analysis of HEK293T cells transfected with Cytokeratin 18 plasmid (Right) or empty vector (Left) for 48 hrs using GTX84255 Cytokeratin 18 antibody [5E8].
Loading : 5 ug per lane



GTX84255 IHC-P Image

IHC-P analysis of human breast tissue using GTX84255 Cytokeratin 18 antibody [5E8].
Antigen retrieval : Heat-induced epitope retrieval by 10mM citrate buffer, pH6.0, 100°C for 10min.



GTX84255 IHC-P Image

IHC-P analysis of human ovary adenocarcinoma tissue using GTX84255 Cytokeratin 18 antibody [5E8].
Antigen retrieval : Heat-induced epitope retrieval by 10mM citrate buffer, pH6.0, 100°C for 10min.



For full product information, images and publications, please visit our [website](https://www.genetex.com).