

## Cytokeratin 18 antibody [1E1]

Cat. No. GTX84256

Host	Mouse
Clonality	Monoclonal
Isotype	IgG1
Applications	WB, ICC/IF, IHC-P
Reactivity	Human, Monkey

References ( 1 )

Package

100 µl

## Applications

## Application Note

\*Optimal dilutions/concentrations should be determined by the researcher.

Suggested dilution	Recommended dilution
WB	1:500-1:1000
ICC/IF	1:100
IHC-P	1:50

Not tested in other applications.

Calculated MW 48 kDa. ( [Note](#) )

## Properties

Form	Liquid
Buffer	PBS, 1% BSA, 50% Glycerol
Preservative	0.02% Sodium azide
Storage	Store as concentrated solution. Centrifuge briefly prior to opening vial. For short-term storage (1-2 weeks), store at 4°C. For long-term storage, aliquot and store at -20°C or below. Avoid multiple freeze-thaw cycles.
Concentration	1 mg/ml (Please refer to the vial label for the specific concentration.)
Immunogen	Human recombinant protein fragment corresponding to amino acids 69-372 of human CK18 (NP_000215) produced in E.coli.
Purification	Purified by affinity chromatography From tissue culture supernatant
Conjugation	Unconjugated



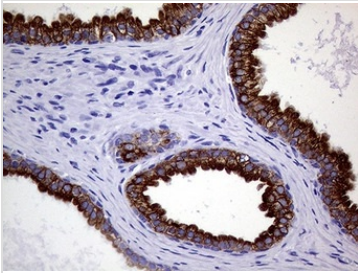
For full product information, images and publications, please visit our [website](#).

For laboratory research use only. Not for any clinical, therapeutic, or diagnostic use in humans or animals. Not for animal or human consumption.

## Note

Purchasers shall not, and agree not to enable third parties to, analyze, copy, reverse engineer or otherwise attempt to determine the structure or sequence of the product.

## DATA IMAGES

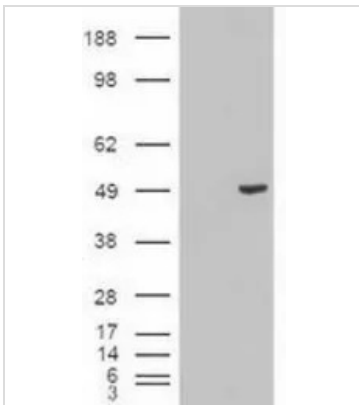


### GTx84256 IHC-P Image

IHC-P analysis of human prostate tissue using GTx84256 Cytokeratin 18 antibody [1E1].

Antigen retrieval : Heat-induced epitope retrieval by 1mM EDTA in 10mM Tris buffer (pH8.0) at 120°C for 3 min.

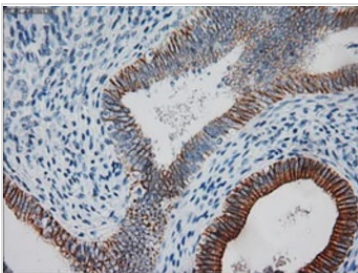
Dilution : 1:6000



### GTx84256 WB Image

WB analysis of HEK293T cells transfected with Cytokeratin 18 plasmid (Right) or empty vector (Left) for 48 hrs using GTx84256 Cytokeratin 18 antibody [1E1].

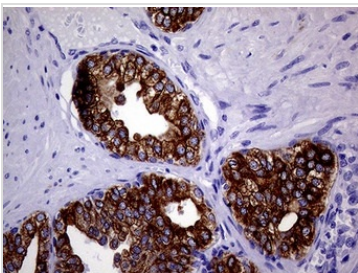
Loading : 5 ug per lane



### GTx84256 IHC-P Image

IHC-P analysis of human endometrium tissue using GTx84256 Cytokeratin 18 antibody [1E1].

Antigen retrieval : Heat-induced epitope retrieval by 10mM citrate buffer, pH6.0, 100°C for 10min.



### GTx84256 IHC-P Image

IHC-P analysis of human prostate carcinoma tissue using GTx84256 Cytokeratin 18 antibody [1E1].

Antigen retrieval : Heat-induced epitope retrieval by 1mM EDTA in 10mM Tris buffer (pH8.5) at 120°C for 3 min.

Dilution : 1:6000



For full product information, images and publications, please visit our [website](https://www.genetex.com).