

KLHL2 antibody [1G7]

Cat. No. GTX84259

Host	Mouse
Clonality	Monoclonal
Isotype	IgG2b
Applications	WB, ICC/IF, FCM
Reactivity	Human, Dog, Monkey

Package
100 µl

Applications

Application Note

*Optimal dilutions/concentrations should be determined by the researcher.

Suggested dilution	Recommended dilution
WB	1:500
ICC/IF	1:100
FCM	1:100

Not tested in other applications.

Calculated MW 66 kDa. ([Note](#))

Properties

Form	Liquid
Buffer	PBS, 1% BSA, 50% Glycerol
Preservative	0.02% Sodium azide
Storage	Store as concentrated solution. Centrifuge briefly prior to opening vial. For short-term storage (1-2 weeks), store at 4°C. For long-term storage, aliquot and store at -20°C or below. Avoid multiple freeze-thaw cycles.
Concentration	0.7 mg/ml (Please refer to the vial label for the specific concentration.)
Immunogen	Human recombinant protein fragment corresponding to amino acids 1-100 and 494-593 of human KLHL2 (NP_009177) produced in HEK293T cell.
Purification	Purified by affinity chromatography
Conjugation	Unconjugated

Note

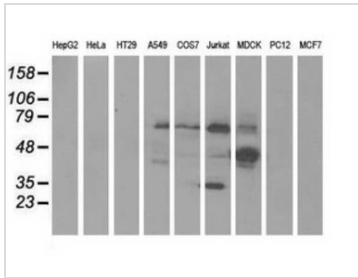
For laboratory research use only. Not for any clinical, therapeutic, or diagnostic use in humans or animals. Not for animal or human consumption.

Purchasers shall not, and agree not to enable third parties to, analyze, copy, reverse engineer or otherwise attempt to determine the structure or sequence of the product.



For full product information, images and publications, please visit our [website](#).

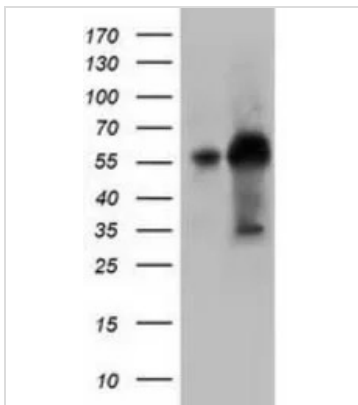
DATA IMAGES



GTX84259 WB Image

WB analysis of various cell lines using GTX84259 KLHL2 antibody [1G7].

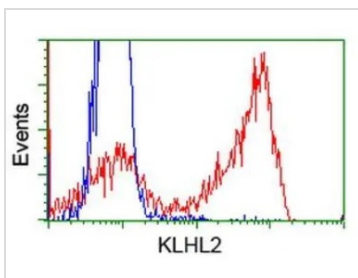
Loading : 35 ug per lane



GTX84259 WB Image

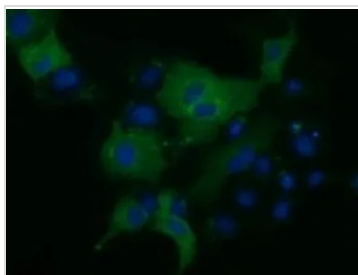
WB analysis of HEK293T cells transfected with KLHL2 plasmid (Right) or empty vector (Left) for 48 hrs using GTX84259 KLHL2 antibody [1G7].

Loading : 5 ug per lane



GTX84259 FCM Image

FACS analysis of HEK293T cells transfected with either KLHL2 plasmid (Red) or empty vector control plasmid (Blue) using GTX84259 KLHL2 antibody [1G7].



GTX84259 ICC/IF Image

ICC/IF analysis of COS7 cells transiently transfected with KLHL2 plasmid using GTX84259 KLHL2 antibody [1G7].



For full product information, images and publications, please visit our [website](#).