

KCTD5 antibody [3C8]

Cat. No. GTX84281

Host	Mouse
Clonality	Monoclonal
Isotype	IgG2b
Applications	WB, ICC/IF, IHC-P, FCM
Reactivity	Human, Mouse, Rat, Dog, Monkey

Package
100 µl

Applications

Application Note

*Optimal dilutions/concentrations should be determined by the researcher.

Suggested dilution	Recommended dilution
WB	1:200
ICC/IF	Assay dependent
IHC-P	1:100-400
FCM	Assay dependent

Not tested in other applications.

Calculated MW 26 kDa. ([Note](#))

Properties

Form	Liquid
Buffer	PBS, 1% BSA, 50% Glycerol
Preservative	0.02% Sodium azide
Storage	Store as concentrated solution. Centrifuge briefly prior to opening vial. For short-term storage (1-2 weeks), store at 4°C. For long-term storage, aliquot and store at -20°C or below. Avoid multiple freeze-thaw cycles.
Concentration	1 mg/ml (Please refer to the vial label for the specific concentration.)
Immunogen	Full length human recombinant protein of human KCTD5 (NP_061865) produced in HEK293T cell.
Purification	Purified by affinity chromatography
Conjugation	Unconjugated

Note

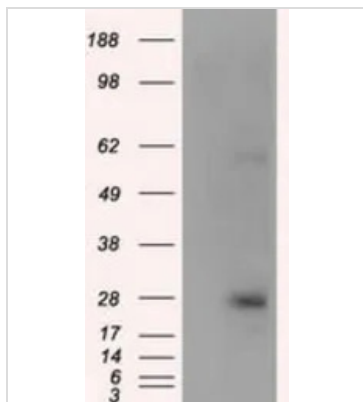
For laboratory research use only. Not for any clinical, therapeutic, or diagnostic use in humans or animals. Not for animal or human consumption.

Purchasers shall not, and agree not to enable third parties to, analyze, copy, reverse engineer or otherwise attempt to determine the structure or sequence of the product.



For full product information, images and publications, please visit our [website](#).

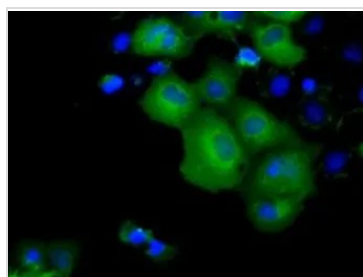
DATA IMAGES



GTX84281 WB Image

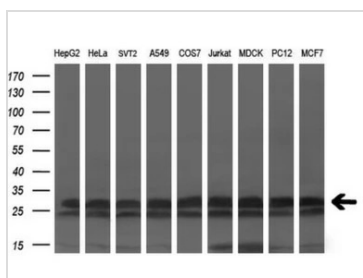
WB analysis of HEK293T cells transfected with KCTD5 plasmid (Right) or empty vector (Left) for 48 hrs using GTX84281 KCTD5 antibody [3C8].

Loading : 5 ug per lane



GTX84281 ICC/IF Image

ICC/IF analysis of COS7 cells transiently transfected with KCTD5 plasmid using GTX84281 KCTD5 antibody [3C8].

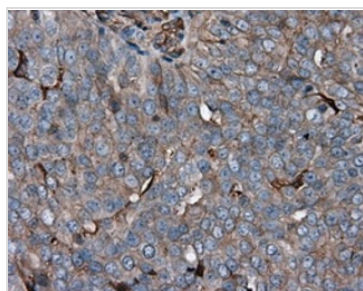


GTX84281 WB Image

WB analysis of various cell lines using GTX84281 KCTD5 antibody [3C8].

Loading : 35 ug per lane

Dilution : 1:200



GTX84281 IHC-P Image

IHC-P analysis of human ovary adenocarcinoma tissue using GTX84281 KCTD5 antibody [3C8].

Antigen retrieval : Heat-induced epitope retrieval by 10mM citrate buffer, pH6.0, 100°C for 10min.

Dilution : 1:50



For full product information, images and publications, please visit our [website](#).