

## ILF2 antibody [6F1]

Cat. No. GTX84290

<b>Host</b>	Mouse
<b>Clonality</b>	Monoclonal
<b>Isotype</b>	IgG1
<b>Applications</b>	WB, ICC/IF, IHC-P
<b>Reactivity</b>	Human, Dog, Monkey

Package  
100 µl

## Applications

## Application Note

\*Optimal dilutions/concentrations should be determined by the researcher.

Suggested dilution	Recommended dilution
WB	1:1000
ICC/IF	1:100
IHC-P	1:50

Not tested in other applications.

**Calculated MW** 43 kDa. ( [Note](#) )

## Properties

<b>Form</b>	Liquid
<b>Buffer</b>	PBS, 1% BSA, 50% Glycerol
<b>Preservative</b>	0.02% Sodium azide
<b>Storage</b>	Store as concentrated solution. Centrifuge briefly prior to opening vial. For short-term storage (1-2 weeks), store at 4°C. For long-term storage, aliquot and store at -20°C or below. Avoid multiple freeze-thaw cycles.
<b>Concentration</b>	1 mg/ml (Please refer to the vial label for the specific concentration.)
<b>Immunogen</b>	Full-length protein expressed in 293T cell transfected with human ILF2 expression vector
<b>Purification</b>	Purified by affinity chromatography From tissue culture supernatant
<b>Conjugation</b>	Unconjugated

## Note

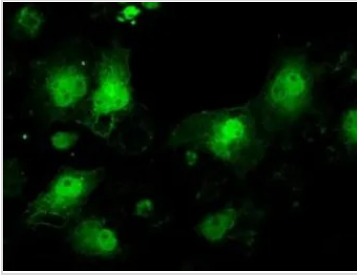
For laboratory research use only. Not for any clinical, therapeutic, or diagnostic use in humans or animals. Not for animal or human consumption.

Purchasers shall not, and agree not to enable third parties to, analyze, copy, reverse engineer or otherwise attempt to determine the structure or sequence of the product.



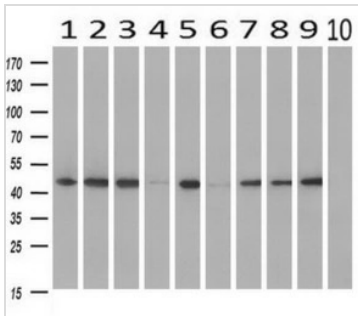
For full product information, images and publications, please visit our [website](#).

## DATA IMAGES



### GTx84290 ICC/IF Image

ICC/IF analysis of COS7 cells transiently transfected with ILF2 plasmid using GTx84290 ILF2 antibody [6F1].

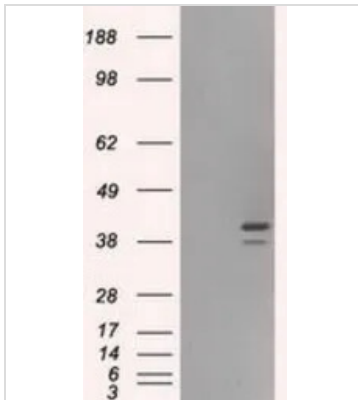


### GTx84290 WB Image

WB analysis of human tissues (Lane 1-Testis ; Lane 2-Omentum ; Lane 3-Uterus ; Lane 4-Breast ; Lane 5-Brain ; Lane 6-Liver ; Lane 7-Ovary ; Lane 8-Thyroid gland ; Lane 9-colon ; Lane 10-spleen) using GTx84290 ILF2 antibody [6F1].

Loading : 10 ug per lane

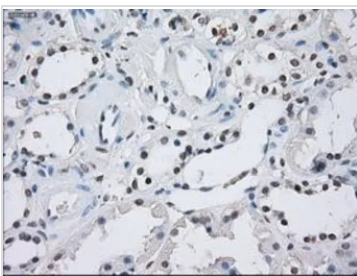
Dilution : 1:500



### GTx84290 WB Image

WB analysis of HEK293T cells transfected with ILF2 plasmid (Right) or empty vector (Left) for 48 hrs using GTx84290 ILF2 antibody [6F1].

Loading : 5 ug per lane



### GTx84290 IHC-P Image

IHC-P analysis of kidney tissue using GTx84290 ILF2 antibody [6F1].

Antigen retrieval : Heat-induced epitope retrieval by 10mM citrate buffer, pH6.0, 100°C for 10min.

Dilution : 1:50



For full product information, images and publications, please visit our [website](https://www.genetex.com).