

IGF2BP2 antibody [3G7]

Cat. No. GTX84303

Host	Mouse
Clonality	Monoclonal
Isotype	IgG1
Applications	WB, ICC/IF, IHC-P, FCM
Reactivity	Human, Dog, Monkey

Package
100 µl

Applications

Application Note

*Optimal dilutions/concentrations should be determined by the researcher.

Suggested dilution	Recommended dilution
WB	1:1000-1:2000
ICC/IF	1:100
IHC-P	1:50
FCM	1:100

Not tested in other applications.

Calculated MW 66 kDa. ([Note](#))

Properties

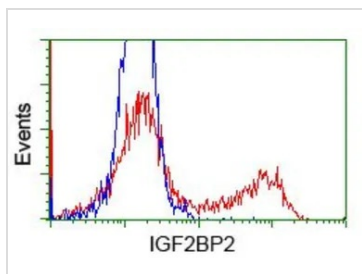
Form	Liquid
Buffer	PBS, 1% BSA, 50% Glycerol
Preservative	0.02% Sodium azide
Storage	Store as concentrated solution. Centrifuge briefly prior to opening vial. For short-term storage (1-2 weeks), store at 4°C. For long-term storage, aliquot and store at -20°C or below. Avoid multiple freeze-thaw cycles.
Concentration	1 mg/ml (Please refer to the vial label for the specific concentration.)
Immunogen	Full length human recombinant protein of human IGF2BP2(NP_006539) produced in HEK293T cell.
Purification	Purified by affinity chromatography From tissue culture supernatant
Conjugation	Unconjugated

For full product information, images and publications, please visit our [website](#).

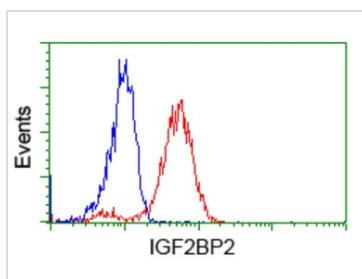
For laboratory research use only. Not for any clinical, therapeutic, or diagnostic use in humans or animals. Not for animal or human consumption.

Note

Purchasers shall not, and agree not to enable third parties to, analyze, copy, reverse engineer or otherwise attempt to determine the structure or sequence of the product.

DATA IMAGES

GTX84303 FCM Image

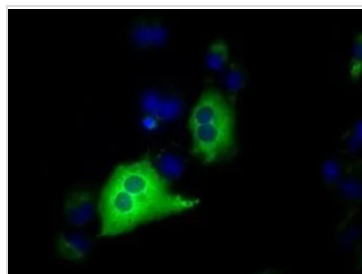
FACS analysis of HEK293T cells transfected with either IGF2BP2 plasmid(Red) or empty vector control plasmid(Blue) using GTX84303 IGF2BP2 antibody [3G7].


GTX84303 FCM Image

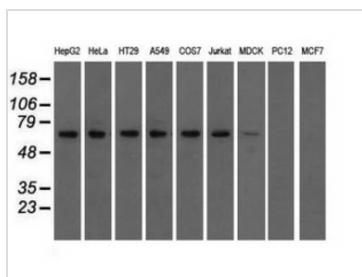
FACS analysis of Jurkat cells using GTX84303 IGF2BP2 antibody [3G7].

Red : Primary antibody

Blue : Negative control antibody


GTX84303 ICC/IF Image

ICC/IF analysis of COS7 cells transiently transfected with IGF2BP2 plasmid using GTX84303 IGF2BP2 antibody [3G7].


GTX84303 WB Image

WB analysis of various cell lines using GTX84303 IGF2BP2 antibody [3G7].

Loading : 35 ug per lane



For full product information, images and publications, please visit our [website](https://www.genetex.com).