

# IGF2BP2 antibody [4F7]

**Cat. No. GTX84309**

<b>Host</b>	Mouse
<b>Clonality</b>	Monoclonal
<b>Isotype</b>	IgG1
<b>Applications</b>	WB, ICC/IF, FCM
<b>Reactivity</b>	Human, Monkey

**Package**  
100 µl

## Applications

### Application Note

\*Optimal dilutions/concentrations should be determined by the researcher.

Suggested dilution	Recommended dilution
WB	1:2000
ICC/IF	1:100
FCM	1:100

Not tested in other applications.

**Calculated MW** 66 kDa. ( [Note](#) )

## Properties

<b>Form</b>	Liquid
<b>Buffer</b>	PBS, 1% BSA, 50% Glycerol
<b>Preservative</b>	0.02% Sodium azide
<b>Storage</b>	Store as concentrated solution. Centrifuge briefly prior to opening vial. For short-term storage (1-2 weeks), store at 4°C. For long-term storage, aliquot and store at -20°C or below. Avoid multiple freeze-thaw cycles.
<b>Concentration</b>	0.77 mg/ml (Please refer to the vial label for the specific concentration.)
<b>Immunogen</b>	Full length human recombinant protein of human IGF2BP2 (NP_006333) produced in HEK293T cell.
<b>Purification</b>	Purified by affinity chromatography
<b>Conjugation</b>	Unconjugated

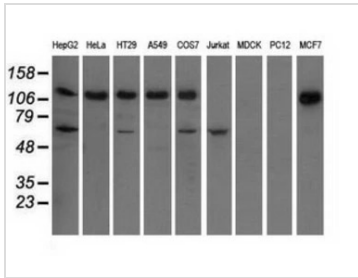
### Note

For laboratory research use only. Not for any clinical, therapeutic, or diagnostic use in humans or animals. Not for animal or human consumption.

Purchasers shall not, and agree not to enable third parties to, analyze, copy, reverse engineer or otherwise attempt to determine the structure or sequence of the product.

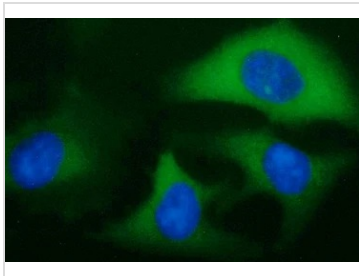


For full product information, images and publications, please visit our [website](#).

**DATA IMAGES**

**GTX84309 WB Image**

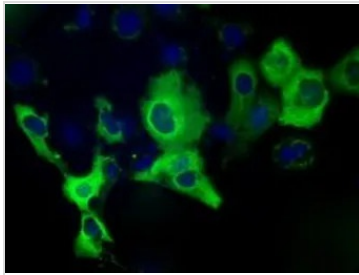
WB analysis of various cell lines using GTX84309 IGF2BP2 antibody [4F7].

Loading : 35 ug per lane

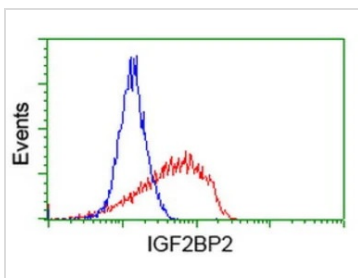

**GTX84309 ICC/IF Image**

ICC/IF analysis of HeLa cells using GTX84309 IGF2BP2 antibody [4F7].

Dilution : 1:100


**GTX84309 ICC/IF Image**

ICC/IF analysis of COS7 cells transiently transfected with IGF2BP2 plasmid using GTX84309 IGF2BP2 antibody [4F7].


**GTX84309 FCM Image**

FACS analysis of Jurkat cells using GTX84309 IGF2BP2 antibody [4F7].

Red : Primary antibody

Blue : Negative control antibody



For full product information, images and publications, please visit our [website](https://www.genetex.com).