

HIPPI antibody [4F6]

Cat. No. GTX84310

Host	Mouse
Clonality	Monoclonal
Isotype	IgG1
Applications	WB, ICC/IF, IHC-P
Reactivity	Human, Mouse, Rat, Monkey

Package
100 µl

Applications

Application Note

*Optimal dilutions/concentrations should be determined by the researcher.

Suggested dilution	Recommended dilution
WB	1:2000
ICC/IF	1:100
IHC-P	1:50

Not tested in other applications.

Calculated MW 49 kDa. ([Note](#))

Properties

Form	Liquid
Buffer	PBS, 1% BSA, 50% Glycerol
Preservative	0.02% Sodium azide
Storage	Store as concentrated solution. Centrifuge briefly prior to opening vial. For short-term storage (1-2 weeks), store at 4°C. For long-term storage, aliquot and store at -20°C or below. Avoid multiple freeze-thaw cycles.
Concentration	1 mg/ml (Please refer to the vial label for the specific concentration.)
Immunogen	Full length human recombinant protein of human IFT57(NP_060480) produced in HEK293T cell.
Purification	Purified by affinity chromatography From tissue culture supernatant
Conjugation	Unconjugated

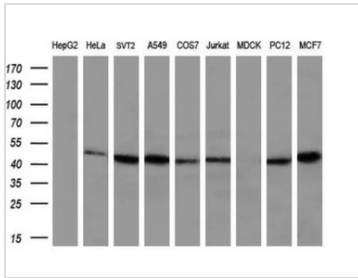
Note

For laboratory research use only. Not for any clinical, therapeutic, or diagnostic use in humans or animals. Not for animal or human consumption.

Purchasers shall not, and agree not to enable third parties to, analyze, copy, reverse engineer or otherwise attempt to determine the structure or sequence of the product.



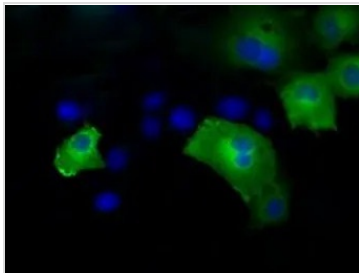
For full product information, images and publications, please visit our [website](#).

DATA IMAGES

GTX84310 WB Image

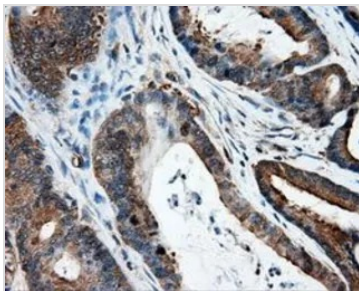
WB analysis of various cell lines using GTX84310 HIPPI antibody [4F6].

Loading : 35 ug per lane

Dilution : 1:200


GTX84310 ICC/IF Image

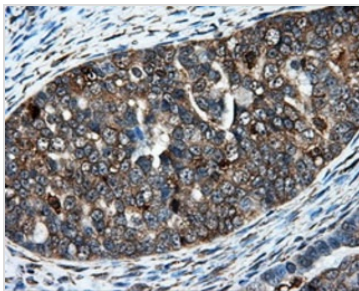
ICC/IF analysis of COS7 cells transiently transfected with HIPPI plasmid using GTX84310 HIPPI antibody [4F6].


GTX84310 IHC-P Image

IHC-P analysis of colon adenocarcinoma tissue using GTX84310 HIPPI antibody [4F6].

Antigen retrieval : Heat-induced epitope retrieval by 10mM citrate buffer, pH6.0, 100°C for 10min.

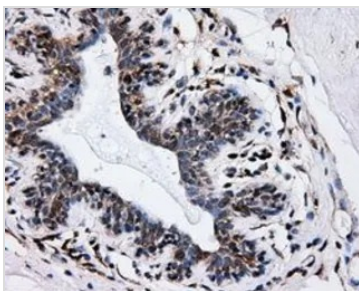
Dilution : 1:50


GTX84310 IHC-P Image

IHC-P analysis of human ovary adenocarcinoma tissue using GTX84310 HIPPI antibody [4F6].

Antigen retrieval : Heat-induced epitope retrieval by 10mM citrate buffer, pH6.0, 100°C for 10min.

Dilution : 1:50


GTX84310 IHC-P Image

IHC-P analysis of breast tissue using GTX84310 HIPPI antibody [4F6].

Antigen retrieval : Heat-induced epitope retrieval by 10mM citrate buffer, pH6.0, 100°C for 10min.

Dilution : 1:50



For full product information, images and publications, please visit our [website](https://www.genetex.com).