

## IFIT1 antibody [3G8]

**Cat. No. GTX84315**

<b>Host</b>	Mouse
<b>Clonality</b>	Monoclonal
<b>Isotype</b>	IgG1
<b>Applications</b>	WB, ICC/IF, IHC-P, FCM
<b>Reactivity</b>	Human, Mouse, Rat, Monkey

References ( 2 )

Package

100 µl

## Applications

**Application Note**

\*Optimal dilutions/concentrations should be determined by the researcher.

Suggested dilution	Recommended dilution
WB	1:500-1000
ICC/IF	1:50-1:100
IHC-P	1:50
FCM	1:100

Not tested in other applications.

**Calculated MW** 55 kDa. ( [Note](#) )

## Properties

<b>Form</b>	Liquid
<b>Buffer</b>	PBS, 1% BSA, 50% Glycerol
<b>Preservative</b>	0.02% Sodium azide
<b>Storage</b>	Store as concentrated solution. Centrifuge briefly prior to opening vial. For short-term storage (1-2 weeks), store at 4°C. For long-term storage, aliquot and store at -20°C or below. Avoid multiple freeze-thaw cycles.
<b>Concentration</b>	1 mg/ml (Please refer to the vial label for the specific concentration.)
<b>Immunogen</b>	Full length human recombinant protein of human IFIT1 (NP_000899) produced in HEK293T cell.
<b>Purification</b>	Purified by affinity chromatography From tissue culture supernatant
<b>Conjugation</b>	Unconjugated



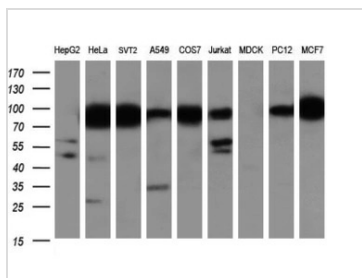
For full product information, images and publications, please visit our [website](#).

For laboratory research use only. Not for any clinical, therapeutic, or diagnostic use in humans or animals. Not for animal or human consumption.

**Note**

Purchasers shall not, and agree not to enable third parties to, analyze, copy, reverse engineer or otherwise attempt to determine the structure or sequence of the product.

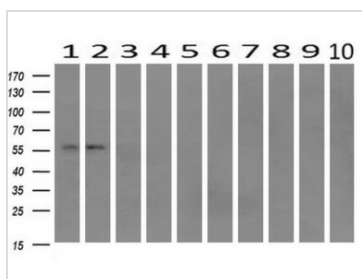
DATA IMAGES



**GTX84315 WB Image**

WB analysis of various cell lines using GTX84315 IFIT1 antibody [3G8].

Loading : 35 ug per lane

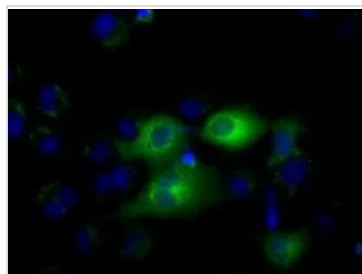


**GTX84315 WB Image**

WB analysis of human tissues (Lane 1-Testis ; Lane 2-Omentum ; Lane 3-Uterus ; Lane 4-Breast ; Lane 5-Brain ; Lane 6-Liver ; Lane 7-Ovary ; Lane 8-Thyroid gland ; Lane 9-colon ; Lane 10-spleen) using GTX84315 IFIT1 antibody [3G8].

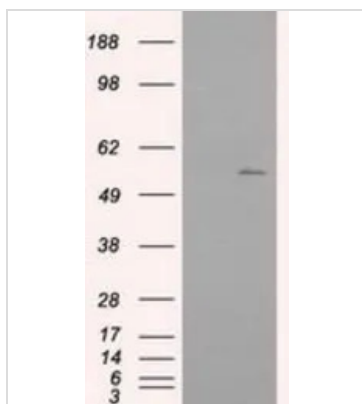
Loading : 10 ug per lane

Dilution : 1:200



**GTX84315 ICC/IF Image**

ICC/IF analysis of COS7 cells transiently transfected with IFIT1 plasmid using GTX84315 IFIT1 antibody [3G8].



**GTX84315 WB Image**

WB analysis of HEK293T cells transfected with IFIT1 plasmid (Right) or empty vector (Left) for 48 hrs using GTX84315 IFIT1 antibody [3G8].

Loading : 5 ug per lane



For full product information, images and publications, please visit our [website](#).