

## IDH3A antibody [2F11]

**Cat. No. GTX84317**

<b>Host</b>	Mouse
<b>Clonality</b>	Monoclonal
<b>Isotype</b>	IgG2a
<b>Applications</b>	WB, ICC/IF, FCM
<b>Reactivity</b>	Human, Dog

**Package**  
100 µl

## Applications

**Application Note**

\*Optimal dilutions/concentrations should be determined by the researcher.

Suggested dilution	Recommended dilution
WB	1:2000
ICC/IF	1:100
FCM	1:100

Not tested in other applications.

**Calculated MW** 40 kDa. ([Note](#))

## Properties

<b>Form</b>	Liquid
<b>Buffer</b>	PBS, 1% BSA, 50% Glycerol
<b>Preservative</b>	0.02% Sodium azide
<b>Storage</b>	Store as concentrated solution. Centrifuge briefly prior to opening vial. For short-term storage (1-2 weeks), store at 4°C. For long-term storage, aliquot and store at -20°C or below. Avoid multiple freeze-thaw cycles.
<b>Concentration</b>	1 mg/ml (Please refer to the vial label for the specific concentration.)
<b>Immunogen</b>	Full length human recombinant protein of human IDH3A (NP_005521) produced in HEK293T cell.
<b>Purification</b>	Purified by affinity chromatography From tissue culture supernatant
<b>Conjugation</b>	Unconjugated

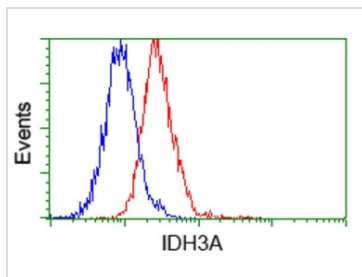
**Note** For laboratory research use only. Not for any clinical, therapeutic, or diagnostic use in humans or animals. Not for animal or human consumption.

Purchasers shall not, and agree not to enable third parties to, analyze, copy, reverse engineer or otherwise attempt to determine the structure or sequence of the product.



For full product information, images and publications, please visit our [website](#).

DATA IMAGES

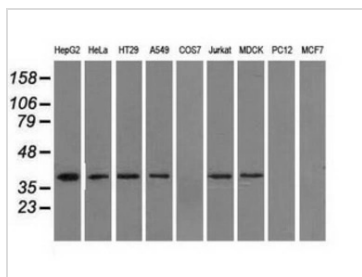


**GTX84317 FCM Image**

FACS analysis of Jurkat cells using GTX84317 IDH3A antibody [2F11].

Red : Primary antibody

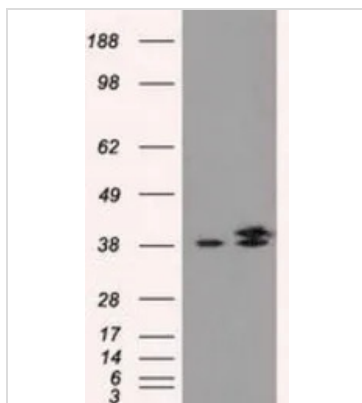
Blue : Negative control antibody



**GTX84317 WB Image**

WB analysis of various cell lines using GTX84317 IDH3A antibody [2F11].

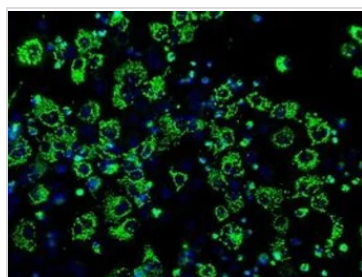
Loading : 35 ug per lane



**GTX84317 WB Image**

WB analysis of HEK293T cells transfected with IDH3A plasmid (Right) or empty vector (Left) for 48 hrs using GTX84317 IDH3A antibody [2F11].

Loading : 5 ug per lane



**GTX84317 ICC/IF Image**

ICC/IF analysis of COS7 cells transiently transfected with IDH3A plasmid using GTX84317 IDH3A antibody [2F11].



For full product information, images and publications, please visit our [website](#).