

IDH1 antibody [2H9]

Cat. No. GTX84319

| | |
|--------------------|------------|
| Host | Mouse |
| Clonality | Monoclonal |
| Isotype | IgG1 |
| Application | WB, ICC/IF |
| Reactivity | Human |

Package
100 µl

APPLICATION

Application Note

*Optimal dilutions/concentrations should be determined by the researcher.

| Suggested dilution | Recommended dilution |
|--------------------|----------------------|
| WB | 1:2000 |
| ICC/IF | 1:100 |

Not tested in other applications.

Calculated MW 47 kDa. ([Note](#))

PROPERTIES

| | |
|----------------------|--|
| Form | Liquid |
| Buffer | PBS, 1% BSA, 50% Glycerol |
| Preservative | 0.02% Sodium azide |
| Storage | Store as concentrated solution. Centrifuge briefly prior to opening vial. For short-term storage (1-2 weeks), store at 4°C. For long-term storage, aliquot and store at -20°C or below. Avoid multiple freeze-thaw cycles. |
| Concentration | 1 mg/ml (Please refer to the vial label for the specific concentration.) |
| Immunogen | Full-length protein expressed in 293T cell transfected with human IDH1 expression vector |
| Purification | Purified by affinity chromatography |
| Conjugation | Unconjugated |

Note

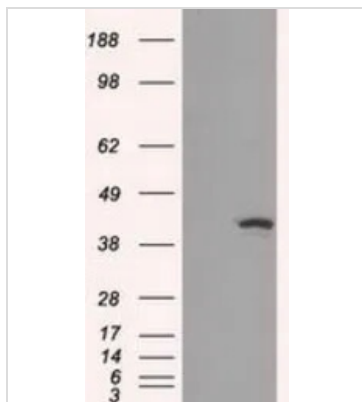
For laboratory research use only. Not for any clinical, therapeutic, or diagnostic use in humans or animals. Not for animal or human consumption.

Purchasers shall not, and agree not to enable third parties to, analyze, copy, reverse engineer or otherwise attempt to determine the structure or sequence of the product.



For full product information, images and publications, please visit our [website](#).

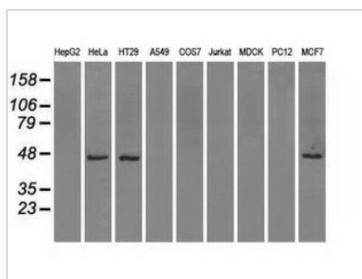
DATA IMAGES



GTx84319 WB Image

WB analysis of HEK293T cells transfected with IDH1 plasmid (Right) or empty vector (Left) for 48 hrs using GTx84319 IDH1 antibody [2H9].

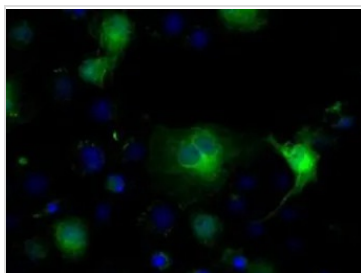
Loading : 5 ug per lane



GTx84319 WB Image

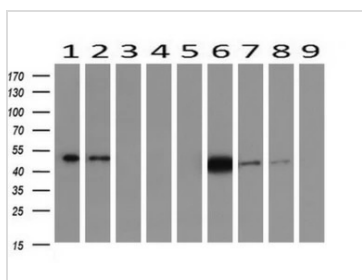
WB analysis of various cell lines using GTx84319 IDH1 antibody [2H9].

Loading : 35 ug per lane



GTx84319 ICC/IF Image

ICC/IF analysis of COS7 cells transiently transfected with IDH1 plasmid using GTx84319 IDH1 antibody [2H9].



GTx84319 WB Image

WB analysis of human tissues (Lane 1-Testis ; Lane 2-Omentum ; Lane 3-Uterus ; Lane 4-Breast ; Lane 5-Brain ; Lane 6-Liver ; Lane 7-Ovary ; Lane 8-Thyroid gland ; Lane 9-colon) using GTx84319 IDH1 antibody [2H9].

Loading : 10 ug per lane

Dilution : 1:200



For full product information, images and publications, please visit our [website](https://www.genetex.com).