

ID3 antibody [15F4]

Cat. No. GTX84320

Host	Mouse
Clonality	Monoclonal
Isotype	IgG1
Applications	WB, ICC/IF, IHC-P, FCM
Reactivity	Human, Dog

Package
100 µl

Applications

Application Note

*Optimal dilutions/concentrations should be determined by the researcher.

Suggested dilution	Recommended dilution
WB	1:200
ICC/IF	Assay dependent
IHC-P	1:100-400
FCM	Assay dependent

Not tested in other applications.

Calculated MW 13 kDa. ([Note](#))

Properties

Form	Liquid
Buffer	PBS, 1% BSA, 50% Glycerol
Preservative	0.02% Sodium azide
Storage	Store as concentrated solution. Centrifuge briefly prior to opening vial. For short-term storage (1-2 weeks), store at 4°C. For long-term storage, aliquot and store at -20°C or below. Avoid multiple freeze-thaw cycles.
Concentration	0.59 mg/ml (Please refer to the vial label for the specific concentration.)
Immunogen	Full length human recombinant protein of human ID3 (NP_002158) produced in HEK293T cell.
Purification	Purified by affinity chromatography
Conjugation	Unconjugated

Note

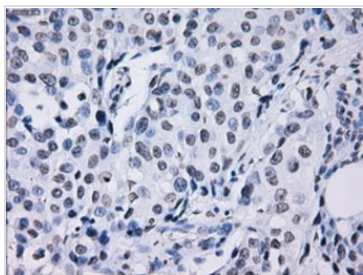
For laboratory research use only. Not for any clinical, therapeutic, or diagnostic use in humans or animals. Not for animal or human consumption.

Purchasers shall not, and agree not to enable third parties to, analyze, copy, reverse engineer or otherwise attempt to determine the structure or sequence of the product.

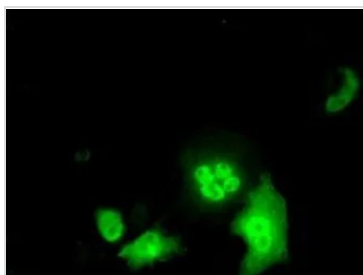


For full product information, images and publications, please visit our [website](#).

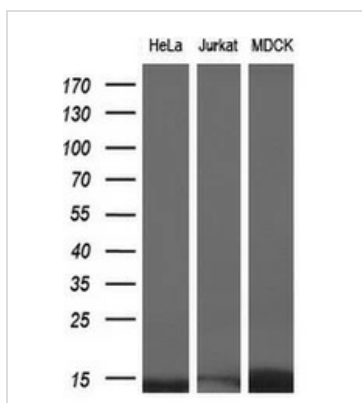
DATA IMAGES

**GTX84320 IHC-P Image**

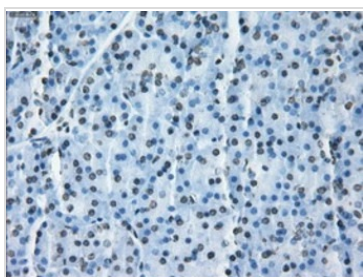
IHC-P analysis of human breast adenocarcinoma tissue using GTX84320 ID3 antibody [15F4].
Antigen retrieval : Heat-induced epitope retrieval by 10mM citrate buffer, pH6.0, 100°C for 10min.

**GTX84320 ICC/IF Image**

ICC/IF analysis of COS7 cells transiently transfected with ID3 plasmid using GTX84320 ID3 antibody [15F4].

**GTX84320 WB Image**

WB analysis of various cell lines using GTX84320 ID3 antibody [15F4].
Loading : 10 ug per lane
Dilution : 1:200

**GTX84320 IHC-P Image**

IHC-P analysis of human pancreas tissue using GTX84320 ID3 antibody [15F4].
Antigen retrieval : Heat-induced epitope retrieval by 10mM citrate buffer, pH6.0, 100°C for 10min.



For full product information, images and publications, please visit our [website](#).