

Grp75 antibody [4A1]

Cat. No. GTX84330

Host	Mouse
Clonality	Monoclonal
Isotype	IgG2a
Applications	WB, ICC/IF
Reactivity	Human, Rat, Dog, Monkey

Package
100 µl

Applications

Application Note

*Optimal dilutions/concentrations should be determined by the researcher.

Suggested dilution	Recommended dilution
WB	1:500
ICC/IF	1:100

Not tested in other applications.

Calculated MW 74 kDa. ([Note](#))

Properties

Form	Liquid
Buffer	PBS, 1% BSA, 50% Glycerol
Preservative	0.02% Sodium azide
Storage	Store as concentrated solution. Centrifuge briefly prior to opening vial. For short-term storage (1-2 weeks), store at 4°C. For long-term storage, aliquot and store at -20°C or below. Avoid multiple freeze-thaw cycles.
Concentration	1 mg/ml (Please refer to the vial label for the specific concentration.)
Immunogen	Full-length protein expressed in 293T cell transfected with human HSPA9 expression vector
Purification	Purified by affinity chromatography From tissue culture supernatant
Conjugation	Unconjugated

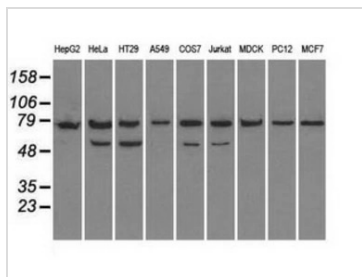
Note For laboratory research use only. Not for any clinical, therapeutic, or diagnostic use in humans or animals. Not for animal or human consumption.

Purchasers shall not, and agree not to enable third parties to, analyze, copy, reverse engineer or otherwise attempt to determine the structure or sequence of the product.



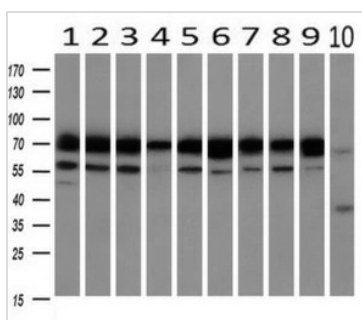
For full product information, images and publications, please visit our [website](#).

DATA IMAGES



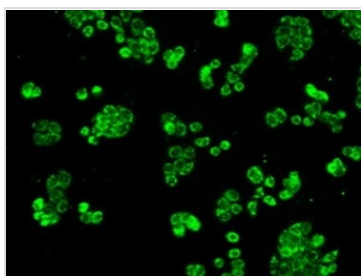
GTX84330 WB Image

WB analysis of various cell lines using GTX84330 Grp75 antibody [4A1].
Loading : 35 ug per lane



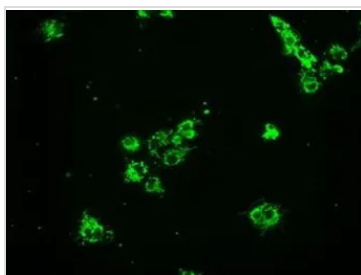
GTX84330 WB Image

WB analysis of human tissues (Lane 1-Testis ; Lane 2-Omentum ; Lane 3-Uterus ; Lane 4-Breast ; Lane 5-Brain ; Lane 6-Liver ; Lane 7-Ovary ; Lane 8-Thyroid gland ; Lane 9-colon ; Lane 10-spleen) using GTX84330 Grp75 antibody [4A1].
Loading : 10 ug per lane
Dilution : 1:500



GTX84330 ICC/IF Image

ICC/IF analysis of HT29 cells using GTX84330 Grp75 antibody [4A1].



GTX84330 ICC/IF Image

ICC/IF analysis of COS7 cells transiently transfected with Grp75 plasmid using GTX84330 Grp75 antibody [4A1].



For full product information, images and publications, please visit our [website](#).