

Grp75 antibody [9F8]

Cat. No. GTX84331

| | |
|---------------------|--------------------------------|
| Host | Mouse |
| Clonality | Monoclonal |
| Isotype | IgG2b |
| Applications | WB, ICC/IF, IHC-P, FCM |
| Reactivity | Human, Mouse, Rat, Dog, Monkey |

Package
100 µl

Applications

Application Note

*Optimal dilutions/concentrations should be determined by the researcher.

| Suggested dilution | Recommended dilution |
|--------------------|----------------------|
| WB | 1:200-1:1000 |
| ICC/IF | 1:50 |
| IHC-P | 1:50 |
| FCM | 1:100 |

Not tested in other applications.

Calculated MW 74 kDa. ([Note](#))

Properties

| | |
|----------------------|----------------------------------------------------------------------------------------------------------------------------------------------------------------------------------------------------------------------------|
| Form | Liquid |
| Buffer | PBS, 1% BSA, 50% Glycerol |
| Preservative | 0.02% Sodium azide |
| Storage | Store as concentrated solution. Centrifuge briefly prior to opening vial. For short-term storage (1-2 weeks), store at 4°C. For long-term storage, aliquot and store at -20°C or below. Avoid multiple freeze-thaw cycles. |
| Concentration | 1 mg/ml (Please refer to the vial label for the specific concentration.) |
| Immunogen | Full length human recombinant protein of human HSPA9 (NP_004125) produced in HEK293T cell. |
| Purification | Purified by affinity chromatography From tissue culture supernatant |
| Conjugation | Unconjugated |



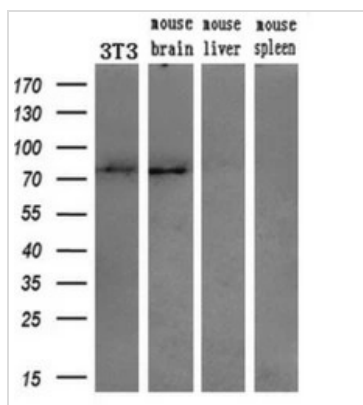
For full product information, images and publications, please visit our [website](#).

For laboratory research use only. Not for any clinical, therapeutic, or diagnostic use in humans or animals. Not for animal or human consumption.

Note

Purchasers shall not, and agree not to enable third parties to, analyze, copy, reverse engineer or otherwise attempt to determine the structure or sequence of the product.

DATA IMAGES

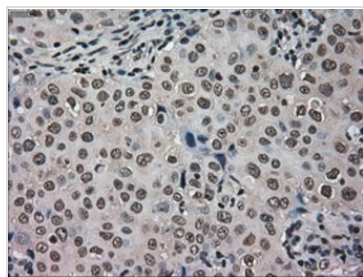


GTx84331 WB Image

WB analysis of various samples using GTx84331 Grp75 antibody [9F8].

Loading : 10 ug per lane

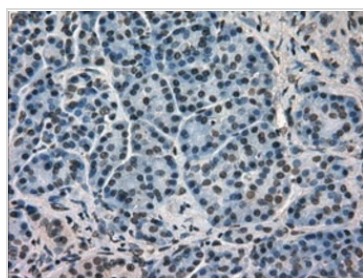
Dilution : 1:200



GTx84331 IHC-P Image

IHC-P analysis of human breast adenocarcinoma tissue using GTx84331 Grp75 antibody [9F8].

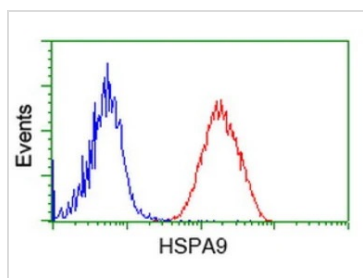
Antigen retrieval : Heat-induced epitope retrieval by 10mM citrate buffer, pH6.0, 100°C for 10min.



GTx84331 IHC-P Image

IHC-P analysis of human pancreas tissue using GTx84331 Grp75 antibody [9F8].

Antigen retrieval : Heat-induced epitope retrieval by 10mM citrate buffer, pH6.0, 100°C for 10min.



GTx84331 FCM Image

FACS analysis of Jurkat cells using GTx84331 Grp75 antibody [9F8].

Red : Primary antibody

Blue : Negative control antibody



For full product information, images and publications, please visit our [website](https://www.genetex.com).