

## Hsp70 antibody [3C6]

**Cat. No. GTX84338**

<b>Host</b>	Mouse
<b>Clonality</b>	Monoclonal
<b>Isotype</b>	IgG1
<b>Applications</b>	WB, ICC/IF, IHC-P, FCM
<b>Reactivity</b>	Human, Dog, Monkey

**Package**  
100 µl

## Applications

**Application Note**

\*Optimal dilutions/concentrations should be determined by the researcher.

Suggested dilution	Recommended dilution
WB	1:2000
ICC/IF	1:100
IHC-P	1:50
FCM	1:100

Not tested in other applications.

**Product Note** This antibody is able to recognize Hsp70 protein , which includes HSPA1A and HSPA1B protein.

## Properties

<b>Form</b>	Liquid
<b>Buffer</b>	PBS, 1% BSA, 50% Glycerol
<b>Preservative</b>	0.02% Sodium azide
<b>Storage</b>	Store as concentrated solution. Centrifuge briefly prior to opening vial. For short-term storage (1-2 weeks), store at 4°C. For long-term storage, aliquot and store at -20°C or below. Avoid multiple freeze-thaw cycles.
<b>Concentration</b>	1 mg/ml (Please refer to the vial label for the specific concentration.)
<b>Immunogen</b>	Full length human recombinant protein of human Hsp70 produced in HEK293T cell.
<b>Purification</b>	Purified by affinity chromatography From tissue culture supernatant
<b>Conjugation</b>	Unconjugated



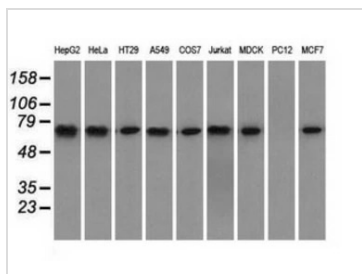
For full product information, images and publications, please visit our [website](#).

For laboratory research use only. Not for any clinical, therapeutic, or diagnostic use in humans or animals. Not for animal or human consumption.

**Note**

Purchasers shall not, and agree not to enable third parties to, analyze, copy, reverse engineer or otherwise attempt to determine the structure or sequence of the product.

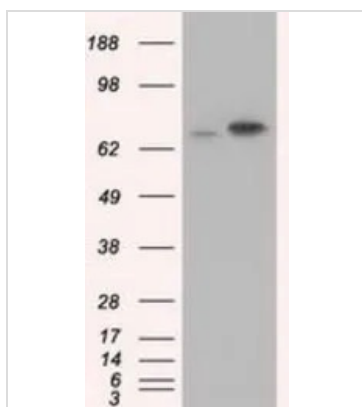
DATA IMAGES



**GTX84338 WB Image**

WB analysis of various cell lines using GTX84338 Hsp70 antibody [3C6].

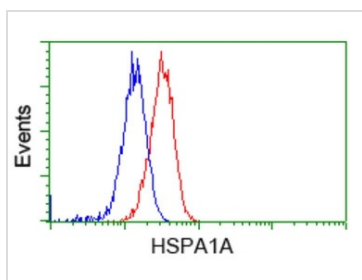
Loading : 35 ug per lane



**GTX84338 WB Image**

WB analysis of HEK293T cells transfected with Hsp70 plasmid (Right) or empty vector (Left) for 48 hrs using GTX84338 Hsp70 antibody [3C6].

Loading : 5 ug per lane

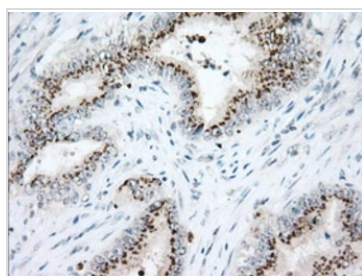


**GTX84338 FCM Image**

FACS analysis of HeLa cells using GTX84338 Hsp70 antibody [3C6].

Red : Primary antibody

Blue : Negative control antibody



**GTX84338 IHC-P Image**

IHC-P analysis of human colon adenocarcinoma tissue using GTX84338 Hsp70 antibody [3C6].

Antigen retrieval : Heat-induced epitope retrieval by 10mM citrate buffer, pH6.0, 100°C for 10min.

Dilution : 1:50



For full product information, images and publications, please visit our [website](#).