

Hsp70 antibody [2C12]

Cat. No. GTX84341

Host	Mouse
Clonality	Monoclonal
Isotype	IgG1
Application	WB, ICC/IF, IHC-P
Reactivity	Human, Dog, Monkey

Package
100 µl

APPLICATION

Application Note

*Optimal dilutions/concentrations should be determined by the researcher.

Suggested dilution	Recommended dilution
WB	1:100
ICC/IF	1:100
IHC-P	1:50

Not tested in other applications.

PROPERTIES

Form	Liquid
Buffer	PBS, 1% BSA, 50% Glycerol
Preservative	0.02% Sodium azide
Storage	Store as concentrated solution. Centrifuge briefly prior to opening vial. For short-term storage (1-2 weeks), store at 4°C. For long-term storage, aliquot and store at -20°C or below. Avoid multiple freeze-thaw cycles.
Concentration	1 mg/ml (Please refer to the vial label for the specific concentration.)
Immunogen	Full length human recombinant protein of human Hsp70 produced in HEK293T cell.
Purification	Purified by affinity chromatography
Conjugation	Unconjugated

Note

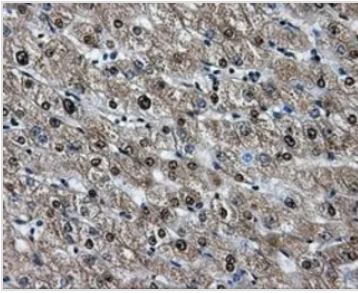
For laboratory research use only. Not for any clinical, therapeutic, or diagnostic use in humans or animals. Not for animal or human consumption.

Purchasers shall not, and agree not to enable third parties to, analyze, copy, reverse engineer or otherwise attempt to determine the structure or sequence of the product.



For full product information, images and publications, please visit our [website](#).

DATA IMAGES

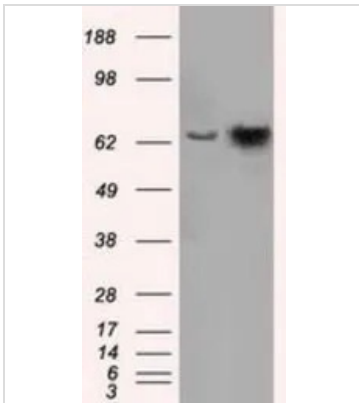


GTX84341 IHC-P Image

IHC-P analysis of liver tissue using GTX84341 Hsp70 antibody [2C12].

Antigen retrieval : Heat-induced epitope retrieval by 10mM citrate buffer, pH6.0, 100°C for 10min.

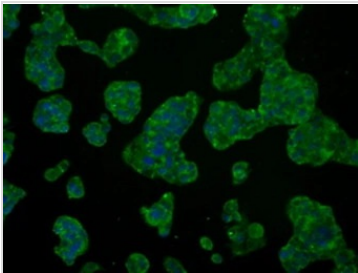
Dilution : 1:50



GTX84341 WB Image

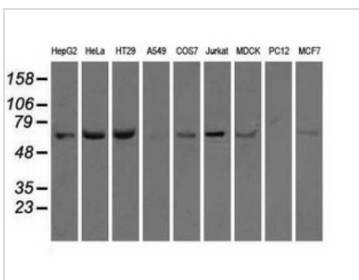
WB analysis of HEK293T cells transfected with Hsp70 plasmid (Right) or empty vector (Left) for 48 hrs using GTX84341 Hsp70 antibody [2C12].

Loading : 5 ug per lane



GTX84341 ICC/IF Image

ICC/IF analysis of HepG2 cells using GTX84341 Hsp70 antibody [2C12].



GTX84341 WB Image

WB analysis of various cell lines using GTX84341 Hsp70 antibody [2C12].

Loading : 35 ug per lane



For full product information, images and publications, please visit our [website](https://www.genetex.com).