

ERAB antibody [5E2]

Cat. No. GTX84344

Host	Mouse
Clonality	Monoclonal
Isotype	IgG2a
Applications	WB, ICC/IF, IHC-P, FCM
Reactivity	Human, Monkey

Package
100 µl

Applications

Application Note

*Optimal dilutions/concentrations should be determined by the researcher.

Suggested dilution	Recommended dilution
WB	1:1000
ICC/IF	1:100
IHC-P	1:50
FCM	1:100

Not tested in other applications.

Calculated MW 27 kDa. ([Note](#))

Properties

Form	Liquid
Buffer	PBS, 1% BSA, 50% Glycerol
Preservative	0.02% Sodium azide
Storage	Store as concentrated solution. Centrifuge briefly prior to opening vial. For short-term storage (1-2 weeks), store at 4°C. For long-term storage, aliquot and store at -20°C or below. Avoid multiple freeze-thaw cycles.
Concentration	0.88 mg/ml (Please refer to the vial label for the specific concentration.)
Immunogen	Full length human recombinant protein of human HSD17B10 (NP_004484) produced in HEK293T cell.
Purification	Purified by affinity chromatography
Conjugation	Unconjugated

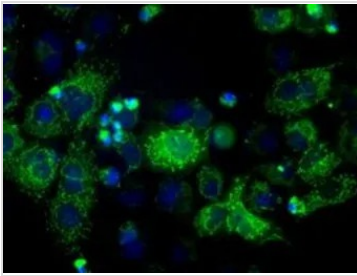
Note

For laboratory research use only. Not for any clinical, therapeutic, or diagnostic use in humans or animals. Not for animal or human consumption.

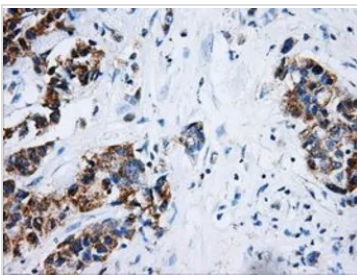
Purchasers shall not, and agree not to enable third parties to, analyze, copy, reverse engineer or otherwise attempt to determine the structure or sequence of the product.



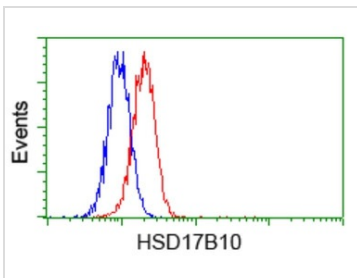
For full product information, images and publications, please visit our [website](#).

DATA IMAGES

GTx84344 ICC/IF Image

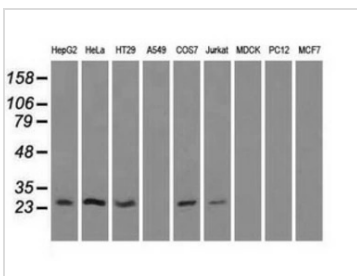
ICC/IF analysis of COS7 cells transiently transfected with ERAB plasmid using GTx84344 ERAB antibody [5E2].


GTx84344 IHC-P Image

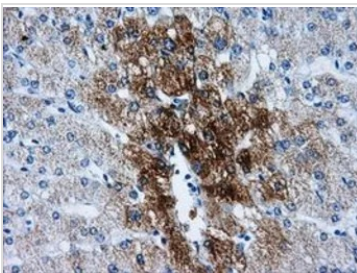
IHC-P analysis of breast adenocarcinoma tissue using GTx84344 ERAB antibody [5E2].
Antigen retrieval : Heat-induced epitope retrieval by 10mM citrate buffer, pH6.0, 100°C for 10min.
Dilution : 1:50


GTx84344 FCM Image

FACS analysis of HeLa cells using GTx84344 ERAB antibody [5E2].
Red : Primary antibody
Blue : Negative control antibody


GTx84344 WB Image

WB analysis of various cell lines using GTx84344 ERAB antibody [5E2].
Loading : 35 ug per lane


GTx84344 IHC-P Image

IHC-P analysis of liver tissue using GTx84344 ERAB antibody [5E2].
Antigen retrieval : Heat-induced epitope retrieval by 10mM citrate buffer, pH6.0, 100°C for 10min.
Dilution : 1:50



For full product information, images and publications, please visit our [website](https://www.genetex.com).