

ERAB antibody [10B4]

Cat. No. GTX84346

| | |
|--------------------|-------------------------|
| Host | Mouse |
| Clonality | Monoclonal |
| Isotype | IgG1 |
| Application | WB, ICC/IF, IHC-P, FACS |
| Reactivity | Human |

Package
100 µl

APPLICATION

Application Note

*Optimal dilutions/concentrations should be determined by the researcher.

| Suggested dilution | Recommended dilution |
|--------------------|----------------------|
| WB | 1:2000 |
| ICC/IF | 1:100 |
| IHC-P | 1:50 |
| FACS | 1:100 |

Not tested in other applications.

Calculated MW 27 kDa. ([Note](#))

PROPERTIES

| | |
|----------------------|--|
| Form | Liquid |
| Buffer | PBS, 1% BSA, 50% Glycerol |
| Preservative | 0.02% Sodium azide |
| Storage | Store as concentrated solution. Centrifuge briefly prior to opening vial. For short-term storage (1-2 weeks), store at 4°C. For long-term storage, aliquot and store at -20°C or below. Avoid multiple freeze-thaw cycles. |
| Concentration | 1 mg/ml (Please refer to the vial label for the specific concentration.) |
| Immunogen | Full length human recombinant protein of human HSD17B10(NP_004484) produced in HEK293T cell. |
| Purification | Purified by affinity chromatography |
| Conjugation | Unconjugated |

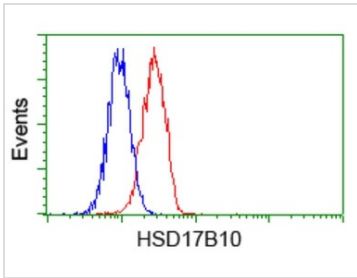
Note

For laboratory research use only. Not for any clinical, therapeutic, or diagnostic use in humans or animals. Not for animal or human consumption.

Purchasers shall not, and agree not to enable third parties to, analyze, copy, reverse engineer or otherwise attempt to determine the structure or sequence of the product.



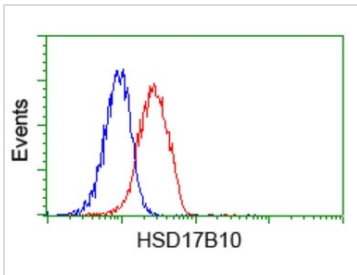
For full product information, images and publications, please visit our [website](#).

DATA IMAGES

GTX84346 FACS Image

FACS analysis of HeLa cells using GTX84346 ERAB antibody [10B4].

Red : Primary antibody

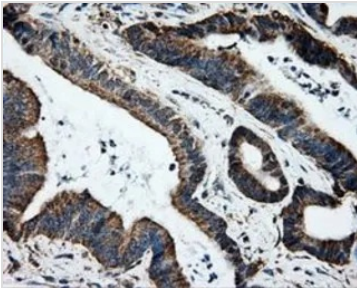
Blue : Negative control antibody


GTX84346 FACS Image

FACS analysis of Jurkat cells using GTX84346 ERAB antibody [10B4].

Red : Primary antibody

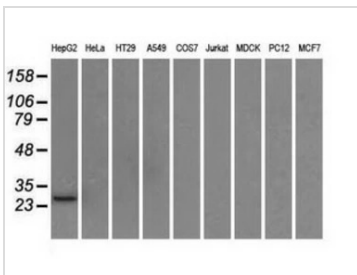
Blue : Negative control antibody


GTX84346 IHC-P Image

IHC-P analysis of colon adenocarcinoma tissue using GTX84346 ERAB antibody [10B4].

Antigen retrieval : Heat-induced epitope retrieval by 10mM citrate buffer, pH6.0, 100°C for 10min.

Dilution : 1:50


GTX84346 WB Image

WB analysis of various cell lines using GTX84346 ERAB antibody [10B4].

Loading : 35 ug per lane



For full product information, images and publications, please visit our [website](https://www.genetex.com).